

Hidden Trails

Ph. 1-888-9-TRAILS

Outdoor Vacations  
- on & with Hidden Trails



## About Hidden Trails



Explore the World on & with Hidden Trails

Hidden Trails is owned and operated by nature enthusiasts who love the outdoors and adventure activities. We have been involved with outdoor vacations for over 20 years. We have collected the best outdoor vacation destinations all over the world in some hidden places we would like to share with you.

These vacations are about forging rivers, biking along canals and through forests, hiking along age-old trails, gazing at beautiful vistas and encountering foreign cultures. But most of all, these trips are about getting away from the cycle of too much work and never enough free time.

Escape from the rituals, which long ago froze our nights and days into little more than routine and away from the worries of our new tense times. It is so satisfying when we take the plunge of adventure - it's unfortunate that we invent so many reasons to put aside living our dreams of adventure. It is sometimes a tangled web that we weave through life. Some of the threads reveal a work-a-day world of commitments, duties and obligations. Other threads are of a quiet fabric of hope, responsibility and refreshment.

On our adventures you see the real country, its back country and meet the locals. The love for the outdoors has no boundaries but possesses a common language we all speak and understand.

You will experience new countries and their customs and make new friends.

These trips have been tested by our staff or associates and received our stamp of approval. If you are considering a special outdoor vacation anywhere in the world, call us first and let our experienced consultants match the perfect trip with your dream. We will listen to you and give you objective advice to help you choose the best destination and adventure.

Your vacation is the most precious time of the year and we are committed to making it the most memorable time of your life. Wherever you go, have a great time and bring back some peace of mind.

Thank you for your continued support.  
Ryan Schmidt  
Hidden Trails

### Hidden Trails

Phone: 604-323-1141

Fax: 604-323-1148

Toll Free: 1-888-9-TRAILS

from within the USA or Canada or

E-mail: [info@hiddentrails.com](mailto:info@hiddentrails.com)

Website: [www.hiddentrails.com/outdoor](http://www.hiddentrails.com/outdoor)

### Address:

659A Moberly Road, Vancouver BC Canada V5Z 4B3

4406 Tennyson Road, Wilmington, DE USA 19802

### Toll Free from the U.K.:

Ph: 0- 808 189-0420

Fax: 0-808-280-1860

### Toll Free Worldwide:

Skype: hiddentrails



# Coral I & II Mega Yachts - Ecuador, South America

Tour Code: ZZ-EC-GALP04  
8 days / 7 nights ~\$4,030.00  
Dates: Available all Year

Trip Rating: ●●●●●  
Difficulty: ●●●●●  
Lodging: ●●●

[Tack:](#)  
[Horses:](#)  
[Pace:](#)

[Airport:](#) Baltra



## Introduction

Galapagos, Ecuador  
M/YCoral I 36 passengers  
M/YCoral II 20 passengers

These unique and functional luxury yachts are a perfect combination of classic beauty and exquisite style. The materials used in their decoration convey a pleasing sensation of warmth and comfort that will transport you automatically into a marine environment. You will be a part of nature thanks to the ample panoramic windows. Every single detail has been taken into consideration to make your stay on board unique and unforgettable. The jacuzzi, sun and shadow decks will give you a perfect space to relax. The social areas and the bar will be a place to enjoy.

### Relax

To relax in the sun or even bathe in the jacuzzi, head to the M/Y Coral I outside decks, where the natural wonders of the Galapagos can be enjoyed from a whole different perspective, whether by the handrail of their decks, the comfort of a sun-lounger or from the balcony at the bow. There's a space for everyone on these deceptively large yachts. Our lounge offers indoor relaxation if you're wanting a break from the sun.

### Enjoy

Enjoy the various activities on board. On board our ship, nights are magical, full of bright stars and countless constellations. You can go shopping at our boutique, or enjoy a freshening drink at the bar.

### Learn

All of our highly-qualified multi-lingual naturalist guides are certified by the Galapagos National Park. On visits to the islands, they will accompany you every step of the way, taking time to explain the highlights as you wonder through this new and magical land. Every evening, these same guides will give you a lecture illustrated with multimedia presentation, imparting and sharing with you their knowledge of geology, history, evolution, flora and fauna of the islands. Enjoy our library to further enhance your experience.

### Feel Safe

Our customers' safety and the conservation and respect for the environment are our main priorities. Our vessels comply with local and international standards enforced by ISM (International Management Code for the Safe Operation of Ships and for Pollution Prevention). Our crews are all highly trained in safety procedures and have years of experience at sea.

## Accommodation



### Accommodations

All nights of this trip are spent on either the Coral I or Coral II (depending on chosen departure). The Coral I & II are gorgeous, comfortable sister yachts with four decks and a total of 18 (36 guests max) and 11 (20 guests max) cabins respectively. Both boats have been refurbished during the summer of 2019.

Each of the Coral boat has 3 different cabin categories:

- Standard Cabin (2 cabins in the Coral I)
- Standard Plus Cabin (8 cabins in the Coral I and 4 cabins in the Coral II)
- Junior Cabin (8 cabins in the Coral I and 7 cabins in the Coral II)

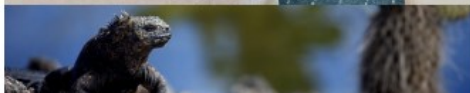
All cabin categories include a private bathroom (with hairdryer and toiletries), safe-deposit box, air conditioning, phone (internal calls only) and a TV.

There are cabins with interconnecting doors suitable for families or friends traveling together.

Our voltage is set for 110-220 volts/60 Hz. There are Wi-Fi zones onboard.







**Standard Cabin** - measuring an average of 7 m<sup>2</sup> / 75ft<sup>2</sup>  
Double and single occupancy possible.  
There are 2 portholes in each Standard Cabin.



**Standard Plus Cabin** - measuring an average of 11 m<sup>2</sup> / 118 ft<sup>2</sup>  
Double and triple occupancy possible.  
There are 2 portholes per Standard Plus Cabin.



**Junior Cabin** - measuring an average of 12 m<sup>2</sup> / 128 ft<sup>2</sup>  
Double and triple occupancy possible.  
Each Junior Cabin has 2 picture windows.

#### Onboard Service and Facilities include:

- Drying machines available for complimentary use
- Variety of onboard activities
- Briefings on the following day's activities
- Informative lectures about the Galapagos



#### Meals

All meals are included during the cruise.

The restaurant serves delicious Ecuadorian and international cuisine that even extends to a BBQ dinner on the open-air Moon Deck.

Make the most of your cruise experience with our beverage packages (not included in tour price - to be paid extra) that offer a range of soft drinks, local beer, a selection of sparkling wines and classic cocktails to be served





at our bars and restaurants.



## Riding

### Staff

Every crew member is trained to provide a first-class service with exceptional professionalism. Genuinely friendly individuals, fully dedicated to providing the best hospitality services, with attention to detail and personalized assistance, our crew's passion and commitment create a one-of-a-kind experience for our guests.

### Physical requirement for the cruise

We recommend that passengers be in reasonably good physical condition as some trails are difficult therefore elderly or disabled people may find them too hard. The passengers with difficulties must notify us about their physical condition in order to make the necessary arrangements.

We reserve the right to refuse a passenger if someone failed to inform of any physical disability, or who in the opinion of the company, constitutes a danger to themselves, other guest, members of the crew, or the smooth operation of the vessel.

### Dry Landings and Wet Landings

On a dry landing, passengers step directly from a dinghy to rocks or onto a dock. We recommend: walking shoes, sunscreen, hat, water, insect repellent and a light jacket.

Wet Landing means that the dinghy edges up onto a beach, where you step into knee-deep water assisted by crew members and guides. We recommend: swimming suit or shorts, walking shoes or slippers, towel that will be provided by the crew while disembarking, sunscreen, hat, insect repellent, plastic bag, well insulated cameras and a windbreaker.

### Smoking policy on board the ship

It is forbidden to smoke inside the yachts or the vessel.  
Smoking is allowed ONLY on the sun decks.

### How can I pay my expenses on board?

Upon arrival, a bill will be opened for you. If you wish to pay with your credit card, we ask you to come to reception to sign a voucher and to make copies of your passport and credit card. Authorizations take about 48 hours, so please do this on your first cruise day. We accept all main credit cards: Diners, Visa, Mastercard, American Express. Travellers Checks, Euros and US Dollars are also accepted.

### What would happen if I get seasick?

We hardly get a seasick passenger on board. However, we have seasick medication on board all our ships, but if you are particularly sensitive you can bring your own medication.

### Is the water safe to drink?

The tap water is generally not safe to drink in Ecuador. Bottled water is readily available at tourist sites, hotels, and restaurants. On board our yachts you will find bottled water in your room. Ice used onboard the yachts is generally made with purified water as well.

## Itinerary

Sample Itinerary: Central + West option - *subject to changes*

### Day 1 (Sunday): Arrival & Santa Cruz Island Visit

In the morning, departure from Quito or Guayaquil to Baltra Island (approx. 2½-hour flight). Arriving in the Galapagos, passengers are picked up at the airport by our naturalist guides and taken on a 10-minute bus drive to the pier to board the MY Coral I or MY Coral II.

In the afternoon, dry landing on Santa Cruz Island. Visit to the Galapagos giant tortoises and land iguanas breeding program, where the famous Lonesome George (last surviving specimen of Pinta Island) lived for decades. The center is managed by the Galapagos National Park's (GNP) staff with the collaboration of scientists from the Charles Darwin Station (CDS). Here, eggs taken from Pinzon, Santiago and Santa Cruz Islands hatch without the danger of introduced species. After artificial incubation; the "galapaguitos" (newborn tortoises) are reared until the age of 5, when they are released in their native habitats, having the enough capabilities to survive alone. Since the 70's, more than 2,000 specimens have returned to their native islands. In addition, the Darwin Station works in several scientific projects and botanical research, providing environmental education to local communities, schools and tourists. If time helps, it is possible to visit Puerto Ayora town.

*Activity Difficulty: easy (flat terrain)*

*Activity Duration: 1½-hour walk*

### Day 2 (Monday): Genovesa Island

This morning, be marveled at the variety of sea life that uses the crevices of the lava cliffs for shelter. Red-billed Tropicbirds fly overhead, switching between their nests and the bay, and a small colony of fur seals may be found near the landing site. You will be dropped off at a steep stairway that begins on rocks at the foot of a path that leads through a seabird colony full of Nazca and Red-footed Boobies. At the plateau, the trail continues inland allowing you to see more nesting booby colonies in the thin Palo Santo forest. Near the end of the trail, over a rocky lava plain, Wedge-rumped Storm Petrels can be observed flying in all directions. If you are lucky, you may catch a glimpse of a Short-eared Owl.

*Activity Difficulty: intermediate (rocky/lava terrain)*

*Activity Duration: 45 min walk*

Riding our dinghy to the far side of the caldera, red-billed tropicbirds display vociferously overhead while Galapagos fur seals can be seen on the shoreline. Once at the top of the rocky stairway we are immediately met by Nazca booby and Red-footed booby colonies, and frigatebirds that fly over the lava plain.





by Nazca boobies, red-footed boobies, mockingbirds and finches that line our way through a palo santo forest until we arrive at an expansive open lava field. Wedge-rumped storm petrels swarm above the lava where we keep our eyes peeled for short-eared owls.

*Activity Difficulty: intermediate (sandy/lava terrain)*

*Activity Duration: 2 ½ hours walk*

### **Day 3 (Tuesday): Rabida Island & Bartolome Island**

Also known as Jervis Island in English, Rabida Island is one of the most diverse in terms of volcanic activity as it lies at the very heart of the archipelago's volcanic origin. In this deep red beach, surrounded by cliffs and steep slopes of volcanic cinder cones it is usual to find nesting colonies of brown pelicans, as well as, nine species of Darwin finches, fur seals, and Nazca boobies.

Snorkel off the coast, where marine life is particularly active and colorful.

*Activity Difficulty: easy (sandy terrain)*

*Activity Duration: 1.5 hour walk / 1-hour snorkeling / 1-hour dinghy ride*

This afternoon, dry landing on Bartolome Island. Considered the most iconic landscape of the entire archipelago, the view from the top of Bartolome Island, overlooking the famous Pinnacle Rock and the austere Santiago Island beyond, is well worth the climb up the wooden boardwalk. This volcanic scene has often been likened to a lunar landscape. Our subsequent snorkel here might put us face to face with Galapagos penguins, white-tipped reef sharks, and playful sea lions.

*Activity Difficulty: intermediate (wooden path of 372 stairs)*

*Activity Duration: 1-hour walk / 45 min snorkeling / beach time*

### **Day 4 (Wednesday): Black Turtle Cove & Tortoise Reserve (Santa Cruz Island)**

On the north shore of Santa Cruz Island, accessible only by sea, four species of mangrove crowd form an internal lagoon: Black Turtle Cove. Turtles visit the calm waters, peaking their heads above the surface, while the fish and rays circle below. White-tipped reef sharks can be seen beneath the boat, plus seabirds including pelicans, herons, and egrets feed from the cove. This cove has been declared as a "Turtle Sanctuary."

*Activity Difficulty: easy*

*Activity Duration: 1-hour dinghy ride*

In the afternoon, dry landing at the Highlands Tortoise Reserve. In the mountains of Galapagos is possible to admire different kinds of birds, such as tree and ground finches, vermillion flycatchers, paint-billed crakes, yellow warblers, and cattle egrets (usually standing on the tortoises' shell). The journey to the reserve offers great opportunities to see the contrasts that the island offers in reference to the variety of ecosystems. The road goes from the coast through the agricultural zone and straight up to the dense humid forests. Often, Galapagos Giant Tortoises are also seen on the way, wandering through pastures in the paddocks. This spot is a birdwatchers' haven since almost every land bird present on the island lives or migrates here.

*Activity Difficulty: easy (flat & muddy terrain - depending on season)*

*Activity Duration: 45-minute drive / 1 ½-hour walk*

### **Day 5 (Thursday): Isabela Island & Fernandina Island**

Vicente Roca point (Isabela Island) is a high peak of land created out of remains of a tuff cone, with two protected turquoise coves on both sides. One of them, the Bolivar Channel is one of the richest marine ecosystems on Earth. This place is only accessible by water, with great opportunities for deep-water snorkeling. In this part of the Galapagos, the upwelling of cold water currents from the west, offer an abundant plankton supply for marine species like red-lipped batfish, seahorses, frogfish, nudibranchs, octopus, and the mola-mola or sunfish. It is common to observe dolphin pods, sea lions rafts, and tuna banks. The dinghy ride along the coast will allow observing a great diversity of seabirds like noddies, brown pelicans, Galapagos penguins, flightless cormorants, Nazca and Blue-footed boobies are often seen feeding all at once during the cold season (May – December). Whale watching is also common while navigating.

*Activity Difficulty: intermediate*

*Activity Duration: 1-hour snorkeling / 1-hour dinghy ride*

Dry landing on Fernandina Island in the afternoon. From Espinosa Point, is possible to admire a wide view of Isabela Island across the Bolivar Channel, an area that hosts some of the highest diversity of endemic sea fauna in the Galapagos. Here, the largest most primitive-looking marine iguanas are found mingling with sea lions and Sally Lightfoot Crabs. Fernandina island displays a wonderful opportunity to encounter flightless cormorants at their nesting sites. The Galapagos penguins and the "King" of predators on the islands, the Galapagos Hawk, can also be spotted. Pa-hoe-hoe and AA lava formations cover the majority of Fernandina terrain. Vegetation is scarce inland, with the exception of a few brachycereus cacti. In the shore, mangrove can be found.

*Activity Difficulty: intermediate (rocky terrain)*

*Activity Duration: 2-hours walk / 1-hour snorkeling*

### **Day 6 (Friday): Urbina Bay & Tagus Cove (Isabela Island)**

Wet landing (might be difficult due to the tide) in Urbina Bay this morning. Volcanic black beach, depending on the season, it is possible to find giant tortoises, land iguanas, and the unusual flightless cormorant. After a short walk inland it's snorkeling time, a chance to swim with sea turtles, sea lions, and countless tropical fish. Urbina Bay features a wide variety of plants with the different range of colors in flowers, attracting different insects, birds, and reptiles. One of the highlights of the island is the uplifted coral reef that resulted from the 1954 seismic activity; here the views of Alcedo Volcano are remarkable. When navigating from Urbina to Tagus Cove whale watching is usual in May – December.

*Activity Difficulty: intermediate (flat & rocky terrain)*

*Activity Duration: 1 ½-hour walk / 1-hour snorkeling*

This afternoon, dry landing in Tagus Cove, on Galapagos' largest island (Isabela) where we will learn about the eruption of the five volcanoes that form it. The trail leads to Darwin's salt-water crater lake and excellent views of lava fields and volcanic formations. We will return by the same path for a dinghy ride along a shoreline full of marine wildlife, where we will admire a variety of seabirds, such as Blue-footed Booby, Brown Noddy, terns, Flightless Cormorant and depending on the season, a large number of Galapagos Penguins which are only 35 cm tall; the only penguin species in the world to live in the tropics.

The population of penguins on the islands is about 2,000 individuals, most of which live on this western portion of Isabela; others are scattered further south. We will have an opportunity to snorkel in deep water. Graffiti believed to have been left by 19th-century pirates is a curious reminder of an intriguing past.

*Activity Difficulty: intermediate/difficult (steep)*

*Activity Duration: 2-hour walk / 40-minutes dinghy ride / 1-hour deep water snorkeling*

### **Day 7 (Saturday): Santiago Island**

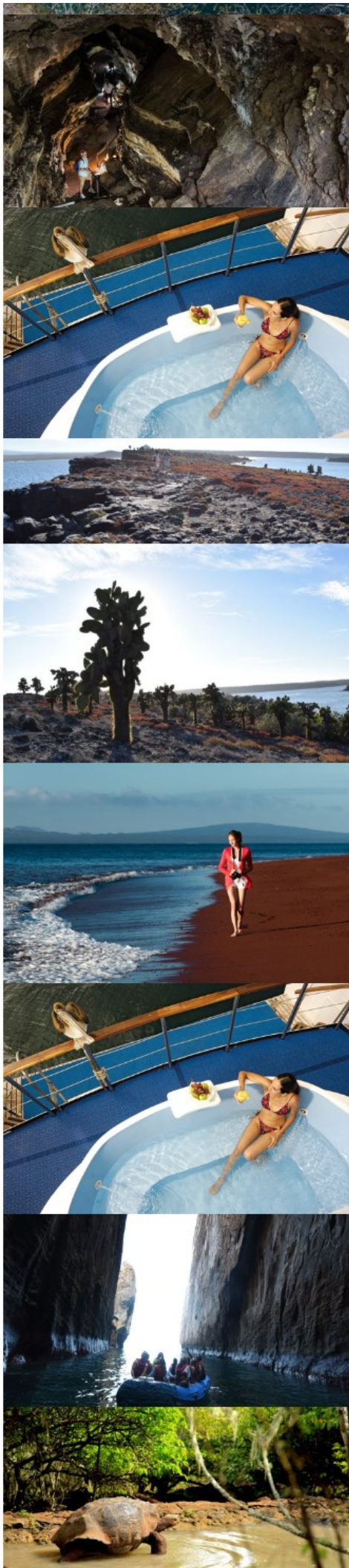
Wet landing at Egas Port (Santiago Island), a black volcanic sand beach, visited by Darwin in 1835. The first section of the trail is formed of volcanic ash (eroded tuff) and the other half is an uneven terrain of volcanic basaltic rock. The unique, truly striking layered terrain of Santiago shore is home to a variety of animals including the bizarre yellow-crowned night heron and marine wildlife including lobster, starfish and marine iguanas grazing on algae beds alongside Sally light-foot crabs. It is easy to see colonies of endemic fur seals swimming in cool water volcanic rock pools.

*Activity Difficulty: intermediate (flat & semi-rocky terrain)*

*Activity Duration: 1½-hour walk / 1-hour snorkeling*

After lunch, wet landing in Sullivan Bay. This site located at the southeastern portion of Santiago Island is of important geologic interest. It features extensive relative young pa-hoe-hoe lava flows formed during the last quarter of the 19th century. In the middle of the lava flow, older reddish-yellow-colored tuff cones appear. Molluscs





quarter of the 19th century. In the middle of the lava flow, older reddish-yellow colored tall cones appear. Mollugo plants with their yellow-to-orange whorled leaves usually grow out of the fissures. Walking on the solidified lava gives the impression of been in another planet. Tree molds are found, indicating that in that position large size plants grew in small crevices, until the lava flow of past eruptions burned down the flora of the island.

*Activity Difficulty: difficult (flat volcanic lava)*

*Activity Duration: 1½-hour walk / 1-hour snorkeling / beach time*

#### **Day 8 (Sunday): Departure**

After breakfast, wet landing at Bachas Beach, on the north side of Santa Cruz; behind the beach lies two small flamingo ponds where iguanas sunbathe, see coastal birds, Darwin finches, mockingbirds, and gulls, as well as interesting native vegetation like red and black mangrove, salt bushes. This beach is one of the main sea turtles nesting sites in the Galapagos. A turtle can lay eggs 3 or 4 times per season with an average of 70 eggs each time. At this paradisiacal site, we will also find the remains of barges that sank a long time ago, when the United States Navy operated a base during World War II on Baltra Island. Local people modified the word barges to "Bachas".

*Activity Difficulty: easy (sandy terrain)*

*Activity Duration: 1-hour walk / 1-hour snorkeling/ beach time*

After the visit, passengers will be transferred to the Baltra airport for their return flight to Guayaquil or Quito.

#### **Sample Itinerary: West + East option - subject to changes**

#### **Day 1 (Wednesday): Arrival & Santa Cruz Island Visit**

Departure from Quito or Guayaquil to Baltra Island (approx. 2¼-hour flight). Arriving in the Galapagos, passengers are picked up at the airport by our naturalist guides and taken on a ten-minute bus drive to the pier to board the M/Y Coral I or M/Y Coral II.

In the afternoon, dry landing on Santa Cruz Island. In the mountains of Galapagos, it is possible to admire different kinds of birds, such as tree and ground finches, vermilion flycatchers, paint-billed cranes, yellow warblers, and cattle egrets (usually standing on the tortoises' shell). The journey to the Highlands Tortoise Reserve offers great opportunities to see the contrasts that the island offers in reference to the variety of ecosystems. The road goes from the coast through the agricultural zone and straight up to the dense humid forests. Often, Galapagos Giant Tortoises are also seen on the way, wandering through pastures in the paddocks. This spot is a birdwatchers' haven since almost every land bird present on the island lives or migrates here.

*Activity Difficulty: easy (flat & muddy terrain depending on season)*

*Activity Duration: 45-minute drive / 1 ½-hour walk*

#### **Day 2 (Thursday): Isabela and Fernandina Islands**

In the morning, you will visit Vicente Roca Point, on Isabela island. It is a high peak of land created out of remains of a tuff cone, with two protected turquoise coves on both sides. One of them, the Bolivar Channel is one of the richest marine ecosystems on Earth. This place is only accessible by water, with great opportunities for deep-water snorkeling. In this part of the Galapagos, the upwelling of cold water currents from the west, offer an abundant plankton supply for marine species like red-lipped batfish, seahorses, frogfish, nudibranchs, octopus, and the mola-mola or sunfish. It is common to observe dolphin pods, sea lions rafts, and tuna banks. The dinghy ride along the coast will allow observing a great diversity of seabirds like noddies, brown pelicans, Galapagos penguins, flightless cormorants, Nazca and Blue-footed boobies are often seen feeding all at once during the cold season (May – December). Whale watching is also common while navigating.

*Activity Difficulty: intermediate*

*Activity Duration: 1-hour snorkeling / 1-hour dinghy ride*

After lunch, dry landing on Fernandina Island. From Espinosa Point, it is possible to admire a wide view of Isabela Island across the Bolivar Channel, an area that hosts some of the highest diversity of endemic sea fauna in the Galapagos. Here, the largest most primitive-looking marine iguanas are found mingling with sea lions and sally Lightfoot Crabs. Fernandina island displays a wonderful opportunity to encounter flightless cormorants at their nesting sites. The Galapagos penguins and the "King" of predators on the islands, the Galapagos Hawk, can also be spotted. Pa-hoe-hoe and AA lava formations cover the majority of Fernandina terrain. Vegetation is scarce inland, with the exception of a few brachycereus cacti. In the shore, mangrove can be found.

*Activity Difficulty: intermediate (rocky terrain)*

*Activity Duration: 2-hours walk / 1-hour snorkeling*

#### **Day 3 (Friday): Urbina Bay & Tagus Cove (Isabela Island)**

After breakfast, wet landing in Urbina Bay (might be difficult due to the tide). Volcanic black beach, depending on the season, it is possible to find giant tortoises, land iguanas, and the unusual flightless cormorant. After a short walk inland it's snorkeling time, a chance to swim with sea turtles, sea lions, and countless tropical fish. Urbina Bay features a wide variety of plants with the different range of colors in flowers, attracting different insects, birds, and reptiles. One of the highlights of the island is the uplifted coral reef that resulted from the 1954 seismic activity; here the views of Alcedo Volcano are remarkable. When navigating from Urbina to Tagus Cove whale watching is usual in May – December.

*Activity Difficulty: intermediate (flat & rocky terrain)*

*Activity Duration: 1 ½-hour walk / 1-hour snorkeling*

This afternoon, dry landing, in Tagus Cove, on Galapagos' largest island (Isabela) where we will learn about the eruption of the five volcanoes that form it. The trail leads to Darwin's salt-water crater lake and excellent views of lava fields and volcanic formations. We will return by the same path for a dinghy ride along a shoreline full of marine wildlife, where we will admire a variety of seabirds, such as Blue-footed Booby, Brown Noddy, terns, Flightless Cormorant and depending on the season, a large number of Galapagos Penguins which are only 35 cm tall; the only penguin species in the world to live in the tropics.

The population of penguins on the islands is about 2,000 individuals, most of which live on this western portion of Isabela; others are scattered further south. We will have an opportunity to snorkel in deep water. Graffiti believed to have been left by 19th-century pirates is a curious reminder of an intriguing past.

*Activity Difficulty: intermediate/difficult (steep)*

*Activity Duration: 2-hour walk / 40-minutes dinghy ride / 1-hour deep water snorkeling*

#### **Day 4 (Saturday): Santiago Island**

This morning, wet landing on Santiago Island. Egas Port is a black volcanic sand beach, visited by Darwin in 1835. The first section of the trail is formed of volcanic ash (eroded tuff) and the other half is an uneven terrain of volcanic basaltic rock. The unique, truly striking layered terrain of Santiago shore is home to a variety of animals including the bizarre yellow-crowned night heron and marine wildlife including lobster, starfish and marine iguanas grazing on algae beds alongside Sally light-foot crabs. It is easy to see colonies of endemic fur seals swimming in cool water volcanic rock pools.

*Activity Difficulty: intermediate (flat & semi-rocky terrain)*

*Activity Duration: 1½-hour walk / 1-hour snorkeling*

After lunch, wet landing in Sullivan Bay. This site located at the southeastern portion of Santiago Island is of important geologic interest. It features extensive relative young pa-hoe-hoe lava flows formed during the last quarter of the 19th century. In the middle of the lava flow, older reddish-yellow-colored tuff cones appear. Mollugo plants with their yellow-to-orange whorled leaves usually grow out of the fissures. Walking on the solidified lava





gives the impression of been in another planet. Tree molds are found, indicating that in that position large size plants grew in small crevices, until the lava flow of past eruptions burned down the flora of the island.

*Activity Difficulty: difficult (flat volcanic lava)*

*Activity Duration: 1½-hour walk / 1-hour snorkeling / beach time*

#### **Day 5 (Sunday): Bachas Beach & North Seymour Island**

We start the day with a wet landing on Bachas Beach. On the north side of Santa Cruz; behind the beach lies two small flamingo ponds where iguanas sunbathe, see coastal birds, Darwin finches, mockingbirds, and gulls, as well as interesting native vegetation like red and black mangrove, salt bushes. This beach is one of the main sea turtles nesting sites in the Galapagos. A turtle can lay eggs 3 or 4 times per season with an average of 70 eggs each time. At this paradisiacal site, we will also find the remains of barges that sank a long time ago, when the United States Navy operated a base during World War II on Baltra Island. Local people modified the word barges to "Bachas".

*Activity Difficulty: easy (sandy terrain)*

*Activity Duration: 1-hour walk / 1-hour snorkeling/ beach time*

In the afternoon, dry landing on North Seymour Island. This flat, uplifted, island is an important spot to see both magnificent and great frigatebird males courting the females by clicking, bill-clapping, shuddering and flapping their wings, all while showing off their grossly inflated, bright red, gular pouch. We will also likely see courting blue-footed boobies displaying their unique feet while "dancing" to a prospective mate. Sea lions, swallow-tailed gulls, crashing surf and distant views of the Daphne Islands top off a great visit.

*Activity Difficulty: medium (rocky & sandy terrain)*

*Activity Duration: 1½-hour walk / 1 hour deep water snorkeling*

#### **Day 6 (Monday): Santa Cruz Island**

We start the day by a visit to the Charles Darwin Research Station. Once home to the famous Lonesome George, the last tortoise of the Pinta race, the breeding and relocation center is named in honor of his long-time guardian. The center is set in the Galapagos National Park Service where various interpretative buildings are available to visit. The grounds, with large stands of native vegetation, are one of the better places to spot some of the seldom seen Darwin's finches such as the woodpecker, cactus and vegetarian finches.

*Activity Difficulty: easy (flat terrain)*

*Activity Duration: 1 hour 45 min bus ride round trip / 1 hour 30 min hike and visit*

In the afternoon, wet Landing on Mosquera Islet, located between North Seymour and Baltra Island. This flat, sandy island has a large colony of sea lions. It is also an excellent site to observe shorebirds such as herons and lava gulls. There is no trail on the islet, the visitor can enjoy the open area. Most of the islet is covered with sand and barren lava rock. Very little sesuvium portulacastrum plants grow on the sand.

*Activity Difficulty: easy (sandy terrain)*

*Activity Duration: 1 ½-hour walk & snorkeling*

#### **Day 7 (Tuesday): South Plaza Islet & Santa Fe Island**

Dry landing on the northern part of South Plaza Islet. The walk begins with an impressive cactus forest\* surrounded by land and marine iguanas; as we reach its highest point, be on the lookout for tropicbirds, a Nazca and blue-footed boobies, swallow-tailed gulls.

In South Plaza there is a large colony of the smaller sized land iguanas. Approximately, there is a population of 300 individuals. They feed on all kinds of vegetation, but during the dry season survive on the fruits and flowers of Opuntia cacti. Due to their proximity with marine iguanas, this is the only place on Earth where we will find the Galapagos hybrid iguana.

*Activity Difficulty: intermediate (rocky terrain)*

*Activity Duration: 2-hour walk*

This afternoon, wet landing on Santa Fe Island. We start with a fabulous snorkel in the turquoise waters of the protected bay, during which we may enjoy time with sea lions, turtles, reef sharks and spotted eagle rays. Landing onto a sandy beach we are immediately distracted by the abundant sea lions there with us. We begin a walk past a forest of island-endemic giant Opuntia cacti. Here we search for another island-endemic the Santa Fe land iguana, paler than its cousins on other islands. Galapagos hawks and even endemic rice rats are also things to look out for.

*Activity Difficulty: intermediate (rocky terrain)*

*Activity Duration: 1-hour walk / 45 min kayaking / 1-hour deep-water snorkeling*

#### **Day 8 (Wednesday): Isla Lobos & Departure**

We start our last day by a dry Landing on Isla Lobos, approximately 20 minutes by boat from Puerto Baquerizo Moreno. Once on the island, the trail is about 850 meters and there will be rocky trail and a nice & easy sand trail too. There is a small population of blue-footed boobies and great frigatebirds nests at this site.

You can also find a colony of sea lions. During the boat ride, you can see brown pelicans and several species of shorebirds.

*Activity Difficulty: intermediate (rocky & sandy terrain)*

*Activity Duration: 1.5 hour walk*

After the visit, you will go to San Cristobal Airport for the return flight to Guayaquil or Quito.

#### **Sample Itinerary: East + South option - subject to changes**

##### **Day 1 (Sunday): Arrival & North Seymour Island Visit**

Departure from Quito or Guayaquil to Baltra (2 ½ hours flight). Passengers are picked up at the airport by our naturalist guides and taken on a ten minute bus drive to the pier to board the Coral I or II.

In the afternoon, dry landing on North Seymour island. This is perhaps one of the busiest tourist destinations on the archipelago. Off of Baltra Island (where the airport is located) and not far from Santa Cruz, North Seymour is the most accessible for day trips out of Santa Cruz's main port, Puerto Ayora. An approximately two hour walk amidst large nesting colonies of blue-footed boobies\*, magnificent and great frigatebirds,\* and swallow-tailed gulls for an in depth encounter with sea bird breeding cycles and as well as sea lions. You will also encounter sea lions, land iguanas, and on a lucky day, you might even come across a Galapagos Snake.

*Activity Difficulty: intermediate (rocky terrain)*

*Activity Duration: 2-hour walk / 30-minute snorkeling*

##### **Day 2 (Monday): Mosquera Islet & Santa Cruz Island**

This morning, dry landing on Mosquera islet. We visit the Charles Darwin Station and Fausto Llerena Breeding Center where the Galapagos giant tortoise breeding program takes place as part of our efforts to preserve the fragile Galapagos environment and where the famous Lonesome George (the last surviving specimen of his species) lived for decades. Here you will be able to see tortoises through all their stages including hatchlings, juveniles, and full-grown individuals. The breeding project began in the 1970's and has been an incredible success in helping repopulate the Galapagos Giant Tortoise population. Out of the eleven species that were once considered to be endangered species 10 subspecies of Galapagos Tortoise have been brought up to guarded levels. The most successful story is the one of the Espanola Tortoises. When the program began, it consisted of a total population of 3 males and 11 females. As of 2008, these 13 tortoises are the parents of over 1000 young tortoises that now roam free on Espanola. The Darwin Station also works



providing environmental education to communities and schools within the islands and to tourists visiting the Galapagos Islands.

*Activity Difficulty: easy (flat terrain)*

*Activity Duration: 1 ½-hour walk*

After lunch, wet landing on Mosquera Islet, located between North Seymour and Baltra Island. This flat, sandy island has a large colony of sea lions. It is also an excellent site to observe shorebirds such as herons and lava gulls. There is no trail on the islet, the visitor can enjoy the open area. Most of the islet is covered with sand and barren lava rock. Very little *Sesuvium portulacastrum* plants grow on the sand.

*Activity Difficulty: easy (sandy terrain)*

*Activity Duration: 1 ½-hour walk & snorkeling*

#### **Day 3 (Tuesday): South Plaza Islet & Santa Fe Island**

After breakfast, dry landing on the northern part of South Plaza Islet. The walk begins with an impressive cactus forest\* surrounded by land and marine iguanas; as we reach its highest point, be on the lookout for tropicbirds, a Nazca and blue-footed boobies, swallow-tailed gulls.

In South Plaza there is a large colony of the smaller sized land iguanas. Approximately, there is a population of 300 individuals. They feed on all kinds of vegetation, but during the dry season survive on the fruits and flowers of *Opuntia* cacti. Due to their proximity with marine iguanas, this is the only place on Earth where we will find the Galapagos hybrid iguana.

*Activity Difficulty: intermediate (rocky terrain)*

*Activity Duration: 2-hour walk*

In the afternoon, wet landing on Santa Fe Island. This location features white sand beaches surrounded by sea lion colonies; through the island path, an endemic cactus forest is passed, home the Santa Fe land iguanas (the largest in the islands). This island is the habitat for a number of species, including the Galapagos hawk, Galapagos snakes, rice rats (one of the few endemic Galapagos rodents), a variety of finches and one of the four mockingbird species of the archipelago.

*Activity Difficulty: intermediate (rocky terrain)*

*Activity Duration: 1 ½-hour walk / 1-hour deep-water snorkeling*

#### **Day 4 (Wednesday): Lobos & San Cristobal Islands**

This morning, dry Landing on Isla Lobos, approximately 20 minutes by boat from Puerto Baquerizo Moreno. Once on the island, the trail is about 850 meters and there will be rocky trail and a nice & easy sand trail too. There is a small population of blue-footed boobies and great frigatebirds nests at this site. You can also find a colony of sea lions. During the boat ride, you can see brown pelicans and several species of shorebirds.

*Activity Difficulty: moderate (rocky/sandy terrain)*

*Activity Duration: 1.5-hour visit*

In the afternoon, dry landing in Puerto Baquerizo Moreno, the capital of the Galapagos Islands. Passengers visit the Interpretation Center, an excellent place to learn about islands' history in The Museum of Natural History which displays information about the volcanic origins of the islands, their remoteness from the continent, ocean currents, climate, the arrival of the different species and their colonization, among other points of interest. The human history is also showcased, chronologically narrating the most significant events related to the discovery and the island's colonization.

*Activity Difficulty: easy / intermediate (flat terrain with stairs)*

*Activity Duration: 1-hour visit / 1-hour walk*

Later in the day, we visit Tijeretas Hill involving a high-intensity walk amidst beautiful landscapes and a magnificent view at the foot of a frigate bird nesting colony.

*Activity Difficulty: difficult (rocky terrain)*

*Activity Duration: 1-hour visit*

#### **Day 5 (Thursday): San Cristobal Island**

We start the day with a wet landing at Cerro Brujo, an eroding tuff cone that is composed of AA lava formations; it is close to a beautiful white sandy beach which is great for snorkeling and sunbathing. Nearby a lagoon ideal for migratory bird species can be seen, including black-necked stilts, ruddy turnstones, whimbrels, sandpiper, and white-cheeked Pintails. Cerro Brujo offers beautiful views of Kicker Rock, an islet in the adjacent southern coast of San Cristobal.

*Activity Difficulty: easy (sandy terrain)*

*Activity Duration: 1-hour walk / 1-hour snorkeling*

Wet landing followed by a high-intensity hike on Pitt Point & Islet. The trail includes a 90 meters long, olive beach and a path that climbs to the top of a volcanic tuff, through several magnificent viewpoints. This is probably the only site where the three booby species of the Galapagos can be seen together, as well as, two species of frigate birds and a sea lion colony. It is also excellent for dinghy rides and snorkeling, where a good range of sea birds can be observed.

*Activity Difficulty: difficult (rocky terrain)*

*Activity Duration: 2½-hour walk / 40-minutes snorkeling or kayaking*

#### **Day 6 (Friday): Espanola Island**

After breakfast, dry landing at Suarez Point. An island of geological interest, being one of the oldest in Galapagos, it has a high percentage of endemism due to its isolation from the rest of the islands. Due to the great variety of wildlife, this is one of the most attractive spots in the Galapagos. Here, it is possible to explore volcanic formations and see large colonies of sea lion and seabirds including the Española mockingbird, Nazca boobies, and the spectacular red-billed tropicbirds. Here, the singular marine iguanas have a turquoise color with reddish parts during the breeding season, lava lizards, and the colorful Sally light-foot crabs. A somewhat lengthy hike brings visitors to nesting grounds that sometimes overlap the trail. Other birdwatchers favorites include the Galapagos dove, the Galapagos hawk, swallow-tailed gulls and the world's largest colony of waved albatross, an unequivocal highlight during mating season (April-December). Admire the island's dramatic backdrop, featuring the famous "Soplador," a seaward blowhole that shoots water up to 23 m. (75 ft.) into the air.

*Activity Difficulty: difficult (rocky ground)*

*Activity Duration: 2½-hours walk*

This afternoon, wet landing in Gardner Bay, a beautiful white coral sandy beach guarded by a colony of sea Lions. Here, there are no trails, so visitors stay along the shore, spotting the Galapagos hawk, the American oystercatcher, the Galapagos dove, hood mockingbirds, yellow warblers, lava lizards, marine iguanas, and three species of Darwin finches, cacti finch (*Geospiza fuliginosa*), the small ground finch (*Geospiza fuliginosa*) and the warbler finch (*Certhidea olivacea*). Swimming and snorkeling offers a great variety of Galapagos marine wildlife: king angelfish, creole fish, damsel fish and parrot fish.

*Activity Difficulty: easy (sandy terrain)*

*Activity Duration: 1-hours walk / 1-hours snorkeling*

#### **Day 7 (Saturday): Floreana Island**

Wet landing, on an olive green, sanded beach: Cormorant Point. We hike from the black mangrove beds to a brackish lagoon, which usually holds one of the largest flamingo populations in the Galapagos. This island features some endemic plants such as *Scaevola villosa*, white and black mangrove, and holy stick. The trail continues to a beautiful white sandy beach, one of the most important nesting sites of Green Pacific Sea Turtles. It is important to avoid walking in the water due to the Sting Rays that may be hiding in the sand, which can be



dangerous if accidentally stepped on. From the beach, one can spot sea turtles, blue-footed boobies plunging into the water, and small reef sharks floating along the shoreline in the search for food.

This coral-sand beach marks the end of our trail, and we head back to the olive beach we landed on, to swim or snorkel amongst sea turtles, reef fish, sea lions and, on a good day, white-tipped reef sharks. A small colony of penguins resides on Floreana and can sometimes be observed as well.

*Activity Difficulty: easy (sandy & flat terrain)*

*Activity Duration: 1-hour walk / 1-hour snorkeling*

In the afternoon, wet landing at a location called Post Office. Located on the north side of Floreana, the bay was named because in 1793 Captain James Colnett installed a wooden barrel which served as an informal post office for sailors passing through, who would take letters with them back to their destinations. Today, visitors continue the tradition by placing unstamped postcards inside the barrel, hoping that some other traveler, going to the letter destination, will take it back for free. The chances are that the letter posted can take a long time to arrive at its destination. However, there have been cases where it has arrived before the sender.

We may also encounter Darwin's finches, Yellow Warbler and Lava Lizards. Great snorkeling opportunities with Green Pacific Sea Turtles. As well, the island is best known for its endemic vegetation: *Scaevola villosa*, *Lecocarpus Pinnatifidus*, and the Galapagos Milkwort. Snorkelers can practice on the main beach among playful sea lions.

*Activity Difficulty: easy (sandy terrain)*

*Activity Duration: 30-minute walk / 1-hour snorkeling*

#### **Day 8 (Sunday): Departure**

Dry landing on Santa Cruz Island. In the mountains of Galapagos, it is possible to admire different kind of birds, such as: tree and ground finches, vermilion flycatchers, paint-billed cranes, yellow warblers, and cattle egrets (usually standing on the tortoises' shell). The journey to the reserve offers great opportunities to see the contrasts that the island offers in reference to the variety of ecosystems. The road goes from the coast through the agricultural zone and straight up to the dense humid forests. Often, Galapagos Giant Tortoises are also seen on the way, wandering through pastures in the paddocks. This spot is a birdwatchers' haven, since almost every land bird present on the island lives or migrates here.

*Activity Difficulty: easy (flat & muddy depending on season)*

*Activity Duration: 45-minute drive / 1 ½-hour walk*

After the visit, passengers will be transferred to the airport for their return flight to Guayaquil or Quito.

#### **Sample Itinerary: South + Central option - subject to changes**

#### **Day 1 (Wednesday): Arrival & San Cristobal Island Visit**

Departure from Quito or Guayaquil to Baltra (2 ½ hours flight). Passengers are picked up at the airport by our naturalist guides and taken on a ten minute bus drive to the pier to board the Coral I or II.

This afternoon, dry landing in Puerto Baquerizo Moreno, the capital of the Galapagos Islands (on San Cristobal Island). Passengers visit the Interpretation Center, an excellent place to learn about islands' history in The Museum of Natural History which displays information about the volcanic origins of the islands, their remoteness from the continent, ocean currents, climate, the arrival of the different species and their colonization, among other points of interest. The human history is also showcased, chronologically narrating the most significant events related to the discovery and the island's colonization.

*Activity Difficulty: easy /intermediate (flat terrain with stairs)*

*Activity Duration: 1-hour visit / 1-hour walk*

Later that day, visit of Tijeretas Hill, which involves a high-intensity walk amidst beautiful landscapes and a magnificent view at the foot of a frigate bird nesting colony.

*Activity Difficulty: difficult (rocky terrain)*

*Activity Duration: 1-hour visit*

#### **Day 2 (Thursday): San Cristobal Island**

After breakfast, wet landing at Cerro Brujo, an eroding tuff cone that is composed of AA lava formations; it is close to a beautiful white sandy beach which is great for snorkeling and sunbathing. Nearby a lagoon ideal for migratory bird species can be seen, including black-necked stilts, ruddy turnstones, whimbrels, sandpiper, and white-cheeked Pintails. Cerro Brujo offers beautiful views of Kicker Rock, an islet in the adjacent southern coast of San Cristobal.

*Activity Difficulty: easy (sandy terrain)*

*Activity Duration: 1-hour walk / 1-hour snorkeling*

Later that day, wet landing followed by a high-intensity hike on rocky terrain on Pitt Point & Islet. The trail includes a 90 meters long, olive beach and a path that climbs to the top of a volcanic tuff, through several magnificent viewpoints. This is probably the only site where the three booby species of the Galapagos can be seen together, as well as, two species of frigate birds and a sea lion colony. It is also excellent for dinghy rides and snorkeling, where a good range of sea birds can be observed.

*Activity Difficulty: difficult (rocky terrain)*

*Activity Duration: 2½-hour walk/ 40-minutes snorkeling or kayaking*

#### **Day 3 (Friday): Espanola Island**

We start our day with a dry landing on Suarez Point. Espanola is an island of geological interest, being one of the oldest in Galapagos, it has a high percentage of endemism due to its isolation from the rest of the islands. Due to the great variety of wildlife, this is one of the most attractive spots in the Galapagos. Here, it is possible to explore volcanic formations and see large colonies of sea lion and seabirds including the Española mockingbird, Nazca boobies, and the spectacular red-billed tropicbirds. Here, the singular marine iguanas have a turquoise color with reddish parts during the breeding season, lava lizards, and the colorful Sally light-foot crabs. A somewhat lengthy hike brings visitors to nesting grounds that sometimes overlap the trail. Other birdwatchers favorites include the Galapagos dove, the Galapagos hawk, swallow-tailed gulls and the world's largest colony of waved albatross, an unequivocal highlight during mating season (April-December). Admire the island's dramatic backdrop, featuring the famous "Soplador," a seaward blowhole that shoots water up to 23 m. (75 ft.) into the air.

*Activity Difficulty: difficult (rocky ground)*

*Activity Duration: 2½-hours walk*

This afternoon, wet landing in Gardner Bay, a beautiful white coral sandy beach guarded by a colony of sea Lions. Here, there are no trails, so visitors stay along the shore, spotting the Galapagos hawk, the American oystercatcher, the Galapagos dove, hood mockingbirds, yellow warblers, lava lizards, marine iguanas, and three species of Darwin finches, cacti finch (*Geospiza fuliginosa*), the small ground finch (*Geospiza fuliginosa*) and the warbler finch (*Certhidea olivacea*). Swimming and snorkeling offers a great variety of Galapagos marine wildlife: king angelfish, creole fish, damsel fish and parrot fish.

*Activity Difficulty: easy (sandy terrain)*

*Activity Duration: 1-hours walk / 1-hours snorkeling*

#### **Day 4 (Saturday): Floreana Island**

Wet landing, on an olive green, sanded beach: Cormorant Point. We hike from the black mangrove beds to a brackish lagoon, which usually holds one of the largest flamingo populations in the Galapagos. This island features some endemic plants such as *Scaevola villosa*, *Lecocarpus* and black mangrove, and both cliffs. The trail



features some endemic plants such as *Scaevola villosa*, white and black mangrove, and noly suck. The trail continues to a beautiful white sandy beach, one of the most important nesting sites of Green Pacific Sea Turtles. It is important to avoid walking in the water due to the Sting Rays that may be hiding in the sand, which can be dangerous if accidentally stepped on. From the beach, one can spot sea turtles, blue-footed boobies plunging into the water, and small reef sharks floating along the shoreline in the search for food.

This coral-sand beach marks the end of our trail, and we head back to the olive beach we landed on, to swim or snorkel amongst sea turtles, reef fish, sea lions and, on a good day, white-tipped reef sharks. A small colony of penguins resides on Floreana and can sometimes be observed as well.

*Activity Difficulty level: easy (sandy & flat terrain)*

*Activity Duration: 1-hour walk / 1-hour snorkeling*

After lunch, wet landing in a location called Post Office. Located on the north side of Floreana, the bay was named because in 1793 Captain James Colnett installed a wooden barrel which served as an informal post office for sailors passing through, who would take letters with them back to their destinations. Today, visitors continue the tradition by placing unstamped postcards inside the barrel, hoping that some other traveler, going to the letter destination, will take it back for free. The chances are that the letter posted can take a long time to arrive at its destination. However, there have been cases where it has arrived before the sender.

We may also encounter Darwin's finches, Yellow Warbler and Lava Lizards. Great snorkeling opportunities with Green Pacific Sea Turtles. As well, the island is best known for its endemic vegetation: *Scaevola villosa*, *Lecocarpus Pinnatifidus*, and the Galapagos Milkwort. Snorkelers can practice on the main beach among playful sea lions.

*Activity Difficulty: easy (sandy terrain)*

*Activity Duration: 30-minute walk / 1-hour snorkeling*

#### **Day 5 (Sunday): Santa Cruz Island**

Dry landing on Santa Cruz Island, this morning. In the mountains of Galapagos, it is possible to admire different kind of birds, such as: tree and ground finches, vermillion flycatchers, paint-billed crakes, yellow warblers, and cattle egrets (usually standing on the tortoises' shell). The journey to the reserve offers great opportunities to see the contrasts that the island offers in reference to the variety of ecosystems. The road goes from the coast through the agricultural zone and straight up to the dense humid forests. Often, Galapagos Giant Tortoises are also seen on the way, wandering through pastures in the paddocks. This spot is a birdwatchers' haven, since almost every land bird present on the island lives or migrates here.

*Activity Difficulty: easy (flat & muddy terrain depending on season)*

*Activity Duration: 45-minute drive / 1 ½-hour walk*

In the afternoon, dry landing and visit of the Galapagos giant tortoises and land iguanas breeding program, where the famous Lonesome George (last surviving specimen of Pinta Island) lived for decades. The center is managed by the Galapagos National Park's (GNP) staff with the collaboration of scientists from the Charles Darwin Station (CDS). Here, eggs taken from Pinzon, Santiago and Santa Cruz Islands hatch without the danger of introduced species. After artificial incubation; the "galapaguitos" (newborn tortoises) are reared until the age of 5, when they are released in their native habitats, having the enough capabilities to survive alone. Since the 70's, more than 2,000 specimens have returned to their native islands. In addition, the Darwin Station works in several scientific projects and botanical research, providing environmental education to local communities, schools and tourists. If time helps, it is possible to visit Puerto Ayora town.

*Activity Difficulty: easy (flat terrain)*

*Activity Duration: 1½-hour walk*

#### **Day 6 (Monday): Genovesa Island**

Dry landing on Genovesa island in the morning. Be marveled at the variety of sea life that uses the crevices of the lava cliffs for shelter. Red-billed Tropic birds fly overhead, switching between their nests and the bay, and a small colony of fur seals may be found near the landing site. You will be dropped off at a steep stairway that begins on rocks at the foot of a path that leads through a seabird colony full of Nazca and Red-footed Boobies. At the plateau, the trail continues inland allowing you to see more nesting booby colonies in the thin Palo Santo forest. Near the end of the trail, over a rocky lava plain, Wedge-rumped Storm-Petrels can be observed flying in all directions. If you are lucky, you may catch a glimpse of a Short-eared Owl.

*Activity Difficulty: intermediate (rocky/lava terrain)*

*Activity Duration: 45-min walk*

This afternoon, wet landing in Darwin Bay. Disembark onto a small sand and coral beach. A short trail heads west along a tidal lagoon and then up a rocky hill that leads to a point overlooking the cliffs and Darwin Bay.

Along the trail near the tidal lagoon, visitors will see pairs of Swallow-tailed Gulls, Lava Gulls, Yellow-crowned and Lava Herons. The trail continues through Palo Santo trees, Opuntia cacti, and Saltbushes inhabited by Great Frigate birds and Red-footed Boobies. This is one of the few places in the islands where visitors are guaranteed to see Red-footed Boobies. It is estimated that more than 200,000 Red-footed Boobies live in the trees and bushes of Genovesa.

*Activity Difficulty: intermediate (sandy/lava terrain)*

*Activity Duration: 2 ½-hour walk*

#### **Day 7 (Tuesday): Rabida and Bartolome Islands**

Also known as Jervis Island in English, Rabida is one of the most diverse in terms of volcanic activity as it lies at the very heart of the archipelago's volcanic origin. In this deep red beach, surrounded by cliffs and steep slopes of volcanic cinder cones it is usual to find nesting colonies of brown pelicans, as well as, nine species of Darwin finches, fur seals, and Nazca boobies.

Snorkel off the coast, where marine life is particularly active and colorful.

*Activity Difficulty level: easy (sandy terrain)*

*Activity Duration: 1 ½-hour walk / 1-hour snorkeling / 1-hour dinghy ride*

This afternoon, we visit the center of the archipelago. Bartolome is one of the most frequently visited sites of all the islands. The highest point is only 374 feet (114 m) above sea level and it has a surface area of 0.74 mi (1.2 km). The island is separated from the island of Santiago by the Sullivan Bay. It is an excellent site for snorkeling, filled with the breathtaking volcanic landscapes that make this corner of the world so unique. The first landing possibility is by a dock, made out of lava and concrete, which soon turns into a wooden staircase built to avoid erosion and consists of 372 steps. It leads to the island's summit, where you will find what probably constitutes the most photographed site in the Galapagos: the Pinnacle Rock. Due to its altitude, the lack of vegetation is immediately noticeable. Pioneer plants can be observed, which are called this way because they are the first to establish roots on new ground. They include *Tiquilia nesiotica* (which is endemic to the island) and *Chamaesyce* (known as sand mat or spurge in English), lava cactus, and *Scaevola* bushes. Behind the beach, there are dunes covered by mangroves. The second type of landing possibility is at coralline beach next to Pinnacle Rock which is a wet landing site. From this point, you will be able to snorkel among tropical fish, perhaps sea lions and penguins as they rest on the lava floors of the intertidal zone and sometimes decide to take a dip.

First landing is dry to trek up Summit Trail. Second landing is wet, to visit Bartolome Beach.

*Activity Difficulty: intermediate (sandy volcanic ash trail and 372 step in a wooden stairway)*

*Activity Duration: 1.5 hour walk / 1-hour snorkeling / beach time*

#### **Day 8 (Wednesday): Black Turtle Cove & Departure**

On the north shore of Santa Cruz Island, accessible only by sea, four species of mangrove crowd form an internal lagoon: Black Turtle Cove. Turtles visit the calm waters, peaking their heads above the surface, while the fish and rays circle below. White-tipped reef sharks can be seen beneath the boat, plus seabirds including pelicans, herons, and terns feed from the cove.



terrace, and enjoy the view from the cove.  
This cove has been declared as a "Turtle Sanctuary."  
*Activity Difficulty: easy*  
*Activity Duration: 1-hour dinghy ride*

After the visit, passengers will be transferred to the airport to their return flight to Guayaquil or Quito.

## Other Info

**Meeting:** Baltra

**Airport:** Baltra

**Transfer:** Baltra

Pick-up/ drop-off is from Baltra Airport (GPS) or San Cristobal Airport (SCY) depending on the itinerary booked.

**Tack:**

**Horses:**

**Pace:**

**Level:** 🐾🐾🐾🐾🐾 (1 to 2 out of 5)

**Riders:** Min 8 riders Max 36 riders

## Land Extension

For our Galapagos Cruise on the Coral Yacht, we offer an inclusive land package that includes airport transfers, hotel accommodations, sightseeing tours and the flight to the Galapagos.  
Here are 2 land package extensions to choose from:

**1. Three Night Extension:**

Three nights Quito in first class hotel, City sightseeing Tour, all transfers, flight to the Galapagos

**2. Five Night Extension:**

Four nights Quito, City tour, Otavalo Market excursion with overnight, all transfers, flight to the Galapagos

### Three Night Extension Sample Itinerary - subject to changes

**Day 1: Arrival**

Arrival – transfer to the hotel.

**Day 2: Quito or Guayaquil**

Quito Colonial City Tour: bustling streets and squares of the largest historical old town in the Americas, a multi-ethnic, artistic and cultural heritage destination.

Or

Guayaquil The romantic Las Peñas neighborhood, the glorious Guayas River, Malecon 2000.

**Day 3+ : Cruise**

Transfer from hotel to the airport, check in and flight to the Galapagos. Start of all-inclusive Galapagos cruise aboard deluxe M/Y Coral I & II or M/Galapagos Legend for 3, 4 or 7 nights

At the end of the cruise flight back to Quito or Guayaquil, transfer to hotel and overnight.

**Day 7, 8 or Day 11 depending on length of cruise: Departure**

Transfer from hotel to the airport for departure. End of services

*Note: The order of the visits is subject to change according to the arrival and departure days.*

Highlights:

- Quito, UNESCO Cultural Heritage site, a wide array of plazas and lovely facades.
- Guayaquil: Las Peñas and Malecón 2000.

Included:

- Domestic air ticket to and from Galapagos Islands.
- Mainland 3 breakfasts.
- Sit in a car Quito or Guayaquil city tour.
- 4 shuttle transfers.
- 3-night first class hotels\* Quito or Guayaquil.
- Quito or Guayaquil city tour.
- Entrance fees (except Galapagos National Park).
- Multilingual guides (upon request).

Not included:

- Meals other than breakfast during land package
- Alcoholic and non-alcoholic beverages.
- International departure tax US\$ 40.80 departing from Quito and US\$ 28.27 departing from Guayaquil.
- Medical services, travel insurance, tips and personal expenses.
- Single room supplements

Notes: No refund on unused portions.

\*Hotels / restaurants (or similar):

Quito Hotel Quito.

Guayaquil Oro Verde / Hampton Inn.

---

### Five Night Extension Sample Itinerary - subject to changes

**Day 1: Arrival**

Arrival – transfer to the hotel.

**Day 2: Quito**

Colonial City Tour: bustling streets and squares of the largest historical old town in the Americas, a multi-ethnic, artistic and cultural heritage destination.

**Day 3: Quito - Peguche – Cotacachi – Magdalena Karanki Community**

The tour includes landscapes of towering volcanoes. Visit the village of Peguche with its traditional looms, and its



Andean instruments. Arrive in Magdalena, once home to Atahualpa, the last of the Incan Emperors; the Karanki community inhabits a paradise lost in time amongst llamas and condors, peaceful lagoons and the patchwork slopes of Imbabura Volcano. Come and admire the beauty of their embroidery, share their everyday shepherding and harvesting activities and stand face-to-face with people untouched by the urgencies of modern life. Overnight in a comfortable room with private facilities and hot water and taste the most authentic Andean food. The nature of this hidden mountain niche can be absorbed in a series of optional activities such as horseback riding, mountain biking, or hiking up to the nearby hills.

**Day 4: Ibarra – Chaski Antawa Train – Salinas – Otavalo Market - Quito**

Visit the Indigenous market of Otavalo for an arts and crafts shopping adventure; then drive to Ibarra and catch the Chaski Antawa train. Landscapes provide a magical setting as you pass through mysterious tunnels, cross bridges spanning canyons and gullies, and admire a unique biodiversity. Then arrive in the Afro-Ecuadorian community of Salinas, well known for its agricultural activities.

**Day 5+: Cruise**

Transfer from hotel to the airport, check in and flight to the Galapagos. Start of all-inclusive Galapagos cruise aboard deluxe M/Y Coral I & II or M/Galapagos Legend for 3, 4 or 7 nights  
At the end of the cruise flight back to Quito or Guayaquil, transfer to hotel and overnight.

**Day 9, 10 or Day 13 depending on length of cruise: Departure**

Transfer from hotel to the airport for departure. End of services

*Note: The order of the visits might change according to the arrival and departure days.*

Highlights:

- Quito, Cultural Heritage of the Humanity, a wide array of plazas and lovely facades.
- Otavalo Indigenous market.
- "Chaski Antawa" Train ride.
- Indigenous communities of Otavalo & Karanki Magdalena, Afro -Ecuadorian Community of Salinas.

Included:

- Domestic air ticket to and from Galapagos Islands.
- Meals: 5 breakfasts, 1 lunch & 1 dinner.
- Sit in a car Quito or Guayaquil city tours, Otavalo area and market & Chaski Antawa train ride.
- 4 shuttle transfers.
- 4 nights first class hotels\* Quito or Guayaquil.
- 1 night in la Magdalena Karanki Community.
- Entrance fees (except Galapagos National Park).
- Multilingual guides (upon request)

Not included:

- Galapagos National Park fee \$100 per adult, \$50 per children, Transit Control Card \$10.
- Alcoholic and non-alcoholic beverages.
- International departure tax US\$ 40.80 departing from Quito and US\$ 28.27 departing from Guayaquil.
- Medical services, travel insurance, tips and personal expenses.

Notes: No refund on unused portions.

- If the train ride is not operating, the portion will be done by car, van or bus.

Hotels / restaurants (or similar):

Quito Hotel Quito

Guayaquil Oro Verde / Hampton Inn

Imbabura Magdalena Karanki community

Salinas Social Project

-Triple accommodations: 15% discount



Rates and Dates 2024 - ZZ-EC-GALP04

Rates include: Accommodation, All meals, Welcome & farewell cocktails, Coffee / tea station, 2 daily excursions, Multilingual naturalist guides (English/Spanish), Snorkeling opportunities, Optional Diving, Fuel surcharge, Free Shuttle service from Quito/Guayaquil Airport-roundtrip (when domestic flight is purchased in combination with cruises)  
Guides speaking French, German and Italian upon request

Packages and Options

Season	Description	~US\$
A 2024	8 day Deluxe Cruise, Standard Interior- Central + West (High)	\$4030
	Upgrade to Standard Plus, pp	\$960
	Upgrade to Junior Suite, pp	\$1660
B 2024	8 day Deluxe Cruise, Standard Interior- West + East (High)	\$4030
	Upgrade to Standard Plus, pp	\$960
	Upgrade to Junior Suite, pp	\$1660
C 2024	8 day Deluxe Cruise, Standard Interior- East + South (High)	\$4030
	Upgrade to Standard Plus, pp	\$960
	Upgrade to Junior Suite, pp	\$1660
D 2024	8 day Deluxe Cruise, Standard Interior- South + Central (High)	\$4030
	Upgrade to Standard Plus, pp	\$960
	Upgrade to Junior Suite, pp	\$1660
E 2024	8 day Deluxe Cruise, Standard Interior- Central + West (Low)	\$4000
	Upgrade to Standard Plus, pp	\$950
	Upgrade to Junior Suite, pp	\$1645
F 2024	8 day Deluxe Cruise, Standard Interior- West + East (Low)	\$4000
	Upgrade to Standard Plus, pp	\$950
	Upgrade to Junior Suite, pp	\$1645
G 2024	8 day Deluxe Cruise, Standard Interior- East + South (Low)	\$4000
	Upgrade to Standard Plus, pp	\$950
	Upgrade to Junior Suite, pp	\$1645
H 2024	8 day Deluxe Cruise, Standard Interior- South + Central (Low)	\$4000
	Upgrade to Standard Plus, pp	\$950
	Upgrade to Junior Suite, pp	\$1645

Rates Note:The transit card fee and the Galapagos entrance fee must be paid to the CGG (Consejo de Gobierno de Galapagos) at the airport in cash.

Transfer Option

Description		
2024	Air ticket from Quito/ Guayaquil to Galapagos, per adult, roundtrip	\$495
2024	Transfer from Quito/ Guayaquil Airport (if airfare not booked) - please inquire (Mandatory)	
2024	Single Supplement: +50% on standard (+75% on holiday season)	
2024	Child discount (under 12) - please inquire	
2024	Triple room discount - please inquire	
2024	CGG Migration Card (mandatory), pp	\$20
2024	Entrance fee to Galapagos (mandatory), per adult - effective until end of July 2024	\$100
2024	Entrance fee to Galapagos (mandatory), per child under 12 - effective until end of July 2024	\$50
2024	Holiday supplement (Jan 1-5 & Dec 18-31): +5%	
2024	Entrance fee to Galapagos (mandatory), per adult - effective from August 1, 2024	\$200
2024	Entrance fee to Galapagos (mandatory), per child under 12 - effective from August 1, 2024	\$100

Tour Dates		
Season	Tour Dates	
F 2024	01/24/2024 - 01/31/2024	8d / 7n 8 day Deluxe Cruise, Standard Interior- West + East (Low)
H 2024	01/24/2024 - 01/31/2024	8d / 7n 8 day Deluxe Cruise, Standard Interior- South + Central (Low)
E 2024	01/28/2024 - 02/04/2024	8d / 7n 8 day Deluxe Cruise, Standard Interior- Central + West (Low)
G 2024	01/28/2024 - 02/04/2024	8d / 7n 8 day Deluxe Cruise, Standard Interior- East + South (Low)
H 2024	01/31/2024 - 02/07/2024	8d / 7n 8 day Deluxe Cruise, Standard Interior- South + Central (Low)
F 2024	01/31/2024 - 02/07/2024	8d / 7n 8 day Deluxe Cruise, Standard Interior- West + East (Low)
G 2024	02/04/2024 - 02/11/2024	8d / 7n 8 day Deluxe Cruise, Standard Interior- East + South (Low)
E 2024	02/04/2024 - 02/11/2024	8d / 7n 8 day Deluxe Cruise, Standard Interior- Central + West (Low)
F 2024	02/07/2024 - 02/14/2024	8d / 7n 8 day Deluxe Cruise, Standard Interior- West + East (Low)
H 2024	02/07/2024 - 02/14/2024	8d / 7n 8 day Deluxe Cruise, Standard Interior- South + Central (Low)
E 2024	02/11/2024 - 02/18/2024	8d / 7n 8 day Deluxe Cruise, Standard Interior- Central + West (Low)
G 2024	02/11/2024 - 02/18/2024	8d / 7n 8 day Deluxe Cruise, Standard Interior- East + South (Low)
H 2024	02/14/2024 - 02/21/2024	8d / 7n 8 day Deluxe Cruise, Standard Interior- South + Central (Low)
F 2024	02/14/2024 - 02/21/2024	8d / 7n 8 day Deluxe Cruise, Standard Interior- West + East (Low)
G 2024	02/18/2024 - 02/25/2024	8d / 7n 8 day Deluxe Cruise, Standard Interior- East + South (Low)
E 2024	02/18/2024 - 02/25/2024	8d / 7n 8 day Deluxe Cruise, Standard Interior- Central + West (Low)
F 2024	02/21/2024 - 02/28/2024	8d / 7n 8 day Deluxe Cruise, Standard Interior- West + East (Low)
H 2024	02/21/2024 - 02/28/2024	8d / 7n 8 day Deluxe Cruise, Standard Interior- South + Central (Low)
E 2024	02/25/2024 - 03/03/2024	8d / 7n 8 day Deluxe Cruise, Standard Interior- Central + West (Low)
G 2024	02/25/2024 - 03/03/2024	8d / 7n 8 day Deluxe Cruise, Standard Interior- East + South (Low)
H 2024	02/28/2024 - 03/06/2024	8d / 7n 8 day Deluxe Cruise, Standard Interior- South + Central (Low)
F 2024	02/28/2024 - 03/06/2024	8d / 7n 8 day Deluxe Cruise, Standard Interior- West + East (Low)
G 2024	03/03/2024 - 03/10/2024	8d / 7n 8 day Deluxe Cruise, Standard Interior- East + South (Low)
E 2024	03/03/2024 - 03/10/2024	8d / 7n 8 day Deluxe Cruise, Standard Interior- Central + West (Low)
F 2024	03/06/2024 - 03/13/2024	8d / 7n 8 day Deluxe Cruise, Standard Interior- West + East (Low)
H 2024	03/06/2024 - 03/13/2024	8d / 7n 8 day Deluxe Cruise, Standard Interior- South + Central (Low)
E 2024	03/10/2024 - 03/17/2024	8d / 7n 8 day Deluxe Cruise, Standard Interior- Central + West (Low)
G 2024	03/10/2024 - 03/17/2024	8d / 7n 8 day Deluxe Cruise, Standard Interior- East + South (Low)
H 2024	03/13/2024 - 03/20/2024	8d / 7n 8 day Deluxe Cruise, Standard Interior- South + Central (Low)
F 2024	03/13/2024 - 03/20/2024	8d / 7n 8 day Deluxe Cruise, Standard Interior- West + East (Low)
G 2024	03/17/2024 - 03/24/2024	8d / 7n 8 day Deluxe Cruise, Standard Interior- East + South (Low)
E 2024	03/17/2024 - 03/24/2024	8d / 7n 8 day Deluxe Cruise, Standard Interior- Central + West (Low)
F 2024	03/20/2024 - 03/27/2024	8d / 7n 8 day Deluxe Cruise, Standard Interior- West + East (Low)
H 2024	03/20/2024 - 03/27/2024	8d / 7n 8 day Deluxe Cruise, Standard Interior- South + Central (Low)



[illegible]



F 2024	09/11/2024 - 09/18/2024	8d / 7n	8 day Deluxe Cruise, Standard Interior- West + East (Low)
E 2024	09/15/2024 - 09/22/2024	8d / 7n	8 day Deluxe Cruise, Standard Interior- Central + West (Low)
G 2024	09/15/2024 - 09/22/2024	8d / 7n	8 day Deluxe Cruise, Standard Interior- East + South (Low)
F 2024	09/18/2024 - 09/25/2024	8d / 7n	8 day Deluxe Cruise, Standard Interior- West + East (Low)
H 2024	09/18/2024 - 09/25/2024	8d / 7n	8 day Deluxe Cruise, Standard Interior- South + Central (Low)
G 2024	09/22/2024 - 09/29/2024	8d / 7n	8 day Deluxe Cruise, Standard Interior- East + South (Low)
E 2024	09/22/2024 - 09/29/2024	8d / 7n	8 day Deluxe Cruise, Standard Interior- Central + West (Low)
H 2024	09/25/2024 - 10/02/2024	8d / 7n	8 day Deluxe Cruise, Standard Interior- South + Central (Low)
F 2024	09/25/2024 - 10/02/2024	8d / 7n	8 day Deluxe Cruise, Standard Interior- West + East (Low)
E 2024	09/29/2024 - 10/06/2024	8d / 7n	8 day Deluxe Cruise, Standard Interior- Central + West (Low)
G 2024	09/29/2024 - 10/06/2024	8d / 7n	8 day Deluxe Cruise, Standard Interior- East + South (Low)
F 2024	10/02/2024 - 10/09/2024	8d / 7n	8 day Deluxe Cruise, Standard Interior- West + East (Low)
H 2024	10/02/2024 - 10/09/2024	8d / 7n	8 day Deluxe Cruise, Standard Interior- South + Central (Low)
G 2024	10/06/2024 - 10/13/2024	8d / 7n	8 day Deluxe Cruise, Standard Interior- East + South (Low)
E 2024	10/06/2024 - 10/13/2024	8d / 7n	8 day Deluxe Cruise, Standard Interior- Central + West (Low)
H 2024	10/09/2024 - 10/16/2024	8d / 7n	8 day Deluxe Cruise, Standard Interior- South + Central (Low)
F 2024	10/09/2024 - 10/16/2024	8d / 7n	8 day Deluxe Cruise, Standard Interior- West + East (Low)
E 2024	10/13/2024 - 10/20/2024	8d / 7n	8 day Deluxe Cruise, Standard Interior- Central + West (Low)
G 2024	10/13/2024 - 10/20/2024	8d / 7n	8 day Deluxe Cruise, Standard Interior- East + South (Low)
F 2024	10/16/2024 - 10/23/2024	8d / 7n	8 day Deluxe Cruise, Standard Interior- West + East (Low)
H 2024	10/16/2024 - 10/23/2024	8d / 7n	8 day Deluxe Cruise, Standard Interior- South + Central (Low)
G 2024	10/20/2024 - 10/27/2024	8d / 7n	8 day Deluxe Cruise, Standard Interior- East + South (Low)
E 2024	10/20/2024 - 10/27/2024	8d / 7n	8 day Deluxe Cruise, Standard Interior- Central + West (Low)
H 2024	10/23/2024 - 10/30/2024	8d / 7n	8 day Deluxe Cruise, Standard Interior- South + Central (Low)
F 2024	10/23/2024 - 10/30/2024	8d / 7n	8 day Deluxe Cruise, Standard Interior- West + East (Low)
E 2024	10/27/2024 - 11/03/2024	8d / 7n	8 day Deluxe Cruise, Standard Interior- Central + West (Low)
G 2024	10/27/2024 - 11/03/2024	8d / 7n	8 day Deluxe Cruise, Standard Interior- East + South (Low)
F 2024	10/30/2024 - 11/06/2024	8d / 7n	8 day Deluxe Cruise, Standard Interior- West + East (Low)
H 2024	10/30/2024 - 11/06/2024	8d / 7n	8 day Deluxe Cruise, Standard Interior- South + Central (Low)
G 2024	11/03/2024 - 11/10/2024	8d / 7n	8 day Deluxe Cruise, Standard Interior- East + South (Low)
E 2024	11/03/2024 - 11/10/2024	8d / 7n	8 day Deluxe Cruise, Standard Interior- Central + West (Low)
H 2024	11/06/2024 - 11/13/2024	8d / 7n	8 day Deluxe Cruise, Standard Interior- South + Central (Low)
F 2024	11/06/2024 - 11/13/2024	8d / 7n	8 day Deluxe Cruise, Standard Interior- West + East (Low)
E 2024	11/10/2024 - 11/17/2024	8d / 7n	8 day Deluxe Cruise, Standard Interior- Central + West (Low)
G 2024	11/10/2024 - 11/17/2024	8d / 7n	8 day Deluxe Cruise, Standard Interior- East + South (Low)
F 2024	11/13/2024 - 11/20/2024	8d / 7n	8 day Deluxe Cruise, Standard Interior- West + East (Low)
H 2024	11/13/2024 - 11/20/2024	8d / 7n	8 day Deluxe Cruise, Standard Interior- South + Central (Low)
G 2024	11/17/2024 - 11/24/2024	8d / 7n	8 day Deluxe Cruise, Standard Interior- East + South (Low)
E 2024	11/17/2024 - 11/24/2024	8d / 7n	8 day Deluxe Cruise, Standard Interior- Central + West (Low)
H 2024	11/20/2024 - 11/27/2024	8d / 7n	8 day Deluxe Cruise, Standard Interior- South + Central (Low)
F 2024	11/20/2024 - 11/27/2024	8d / 7n	8 day Deluxe Cruise, Standard Interior- West + East (Low)
E 2024	11/24/2024 - 12/01/2024	8d / 7n	8 day Deluxe Cruise, Standard Interior- Central + West (Low)
G 2024	11/24/2024 - 12/01/2024	8d / 7n	8 day Deluxe Cruise, Standard Interior- East + South (Low)
F 2024	11/27/2024 - 12/04/2024	8d / 7n	8 day Deluxe Cruise, Standard Interior- West + East (Low)
H 2024	11/27/2024 - 12/04/2024	8d / 7n	8 day Deluxe Cruise, Standard Interior- South + Central (Low)
G 2024	12/01/2024 - 12/08/2024	8d / 7n	8 day Deluxe Cruise, Standard Interior- East + South (Low)
E 2024	12/01/2024 - 12/08/2024	8d / 7n	8 day Deluxe Cruise, Standard Interior- Central + West (Low)
H 2024	12/04/2024 - 12/11/2024	8d / 7n	8 day Deluxe Cruise, Standard Interior- South + Central (Low)
F 2024	12/04/2024 - 12/11/2024	8d / 7n	8 day Deluxe Cruise, Standard Interior- West + East (Low)
E 2024	12/08/2024 - 12/15/2024	8d / 7n	8 day Deluxe Cruise, Standard Interior- Central + West (Low)
G 2024	12/08/2024 - 12/15/2024	8d / 7n	8 day Deluxe Cruise, Standard Interior- East + South (Low)
F 2024	12/11/2024 - 12/18/2024	8d / 7n	8 day Deluxe Cruise, Standard Interior- West + East (Low)
H 2024	12/11/2024 - 12/18/2024	8d / 7n	8 day Deluxe Cruise, Standard Interior- South + Central (Low)
G 2024	12/15/2024 - 12/22/2024	8d / 7n	8 day Deluxe Cruise, Standard Interior- East + South (Low)
E 2024	12/15/2024 - 12/22/2024	8d / 7n	8 day Deluxe Cruise, Standard Interior- Central + West (Low)
D 2024	12/18/2024 - 12/25/2024	8d / 7n	8 day Deluxe Cruise, Standard Interior- South + Central (High)
B 2024	12/18/2024 - 12/25/2024	8d / 7n	8 day Deluxe Cruise, Standard Interior- West + East (High)
A 2024	12/22/2024 - 12/29/2024	8d / 7n	8 day Deluxe Cruise, Standard Interior- Central + West (High)
C 2024	12/22/2024 - 12/29/2024	8d / 7n	8 day Deluxe Cruise, Standard Interior- East + South (High)
B 2024	12/25/2024 - 01/01/2025	8d / 7n	8 day Deluxe Cruise, Standard Interior- West + East (High)
D 2024	12/25/2024 - 01/01/2025	8d / 7n	8 day Deluxe Cruise, Standard Interior- South + Central (High)
C 2024	12/29/2024 - 01/05/2025	8d / 7n	8 day Deluxe Cruise, Standard Interior- East + South (High)
A 2024	12/29/2024 - 01/05/2025	8d / 7n	8 day Deluxe Cruise, Standard Interior- Central + West (High)

Min/Max: 8/36

Weekly departures Sun-Su or We-We

Rates do not include: Drinks, Air ticket from Quito/ Guayaquil to Galapagos (can be booked for extra fee), Galapagos Entrance Fee (mandatory), CGG Migration Control Card (mandatory), Gratuities, Travel insurance, Gratuities, Snorkelling / diving equipment & Wet suits / kayak rentals



## Reservation Form

# Hidden Trails Outdoor Reservation Form

**Tour :** \_\_\_\_\_ **Code #:** \_\_\_\_\_ **from:** \_\_\_\_\_ **to :** \_\_\_\_\_

The Travelers (Last Name, First Name)	Male Female	Single room/ or tent	Birth Date MM/DD/YY	Height	Weight*	Special diets**	Allergies	Medical Con.	Excellent	Good	Moderate	Poor	Fitness Level	Need to rent equipment
1.		<input type="checkbox"/>	___/___/___			<input type="checkbox"/>	<input type="checkbox"/>	<input type="checkbox"/>	<input type="checkbox"/>	<input type="checkbox"/>	<input type="checkbox"/>	<input type="checkbox"/>		
2.		<input type="checkbox"/>	___/___/___			<input type="checkbox"/>	<input type="checkbox"/>	<input type="checkbox"/>	<input type="checkbox"/>	<input type="checkbox"/>	<input type="checkbox"/>	<input type="checkbox"/>		
3.		<input type="checkbox"/>	___/___/___			<input type="checkbox"/>	<input type="checkbox"/>	<input type="checkbox"/>	<input type="checkbox"/>	<input type="checkbox"/>	<input type="checkbox"/>	<input type="checkbox"/>		
4.		<input type="checkbox"/>	___/___/___			<input type="checkbox"/>	<input type="checkbox"/>	<input type="checkbox"/>	<input type="checkbox"/>	<input type="checkbox"/>	<input type="checkbox"/>	<input type="checkbox"/>		

\* If more than 200 lbs we need to reconfirm with our partners first

\*\* Details on dietary needs on separate sheet, please.

Special Diets: \_\_\_\_\_

How often do you exercise? \_\_\_\_\_ Describe your experience: \_\_\_\_\_

Have you been on other riding tours? No ☐ Yes ☐ last trip when? \_\_\_\_\_ Trip: \_\_\_\_\_

If Hidden Trails offers a transfer from the local airport/station: I would like the transfer to be included: YES ☐ NO ☐

In an emergency, name and phone number of contact: \_\_\_\_\_

Attention: Please, if there is more than one participant, all have to sign the reservation form - make copies if needed

With my signature I confirm my reservation of the listed program(s) under the Hidden Trails Booking Conditions. I'm aware, and I made all participants aware of the risk involved with these outdoor adventure activities. All participants have read and agree with the Hidden Trails *Booking Conditions* and the Hidden Trails *Recreational Activity Release and Indemnity Agreement* in this brochure or as listed on the Internet.

I (we) will sign and forward the *Recreational Activity Release and Indemnity Agreement* at least 8 weeks before trip starting date.

**Last Name and First Name (The Traveler)** \_\_\_\_\_

**Street** \_\_\_\_\_ **e-mail** \_\_\_\_\_

**City** \_\_\_\_\_ **State** \_\_\_\_\_ **Postal/Zip Code** \_\_\_\_\_

**Phone (wk)** \_\_\_\_\_ **(hm)** \_\_\_\_\_ **Fax** \_\_\_\_\_

**Date** \_\_\_\_\_

**Signature (mandatory)** 1. \_\_\_\_\_

Please, charge a 25% deposit (minimum \$ 350 per person) now and full payment 10 weeks before starting date to my credit card.

For payments by **VISA** ☐ or **Mastercard** ☐ (no debit cards)

Cardholder: \_\_\_\_\_

Card # \_\_\_\_\_

-----3 digit Security # -----

Exp.Date: \_\_\_\_\_

Signature: \_\_\_\_\_

Billing Address for Credit Card (if different than mailing address): \_\_\_\_\_

I have enclosed a check for the deposit ☐

Additional Signatures:

2. \_\_\_\_\_

3. \_\_\_\_\_

4. \_\_\_\_\_

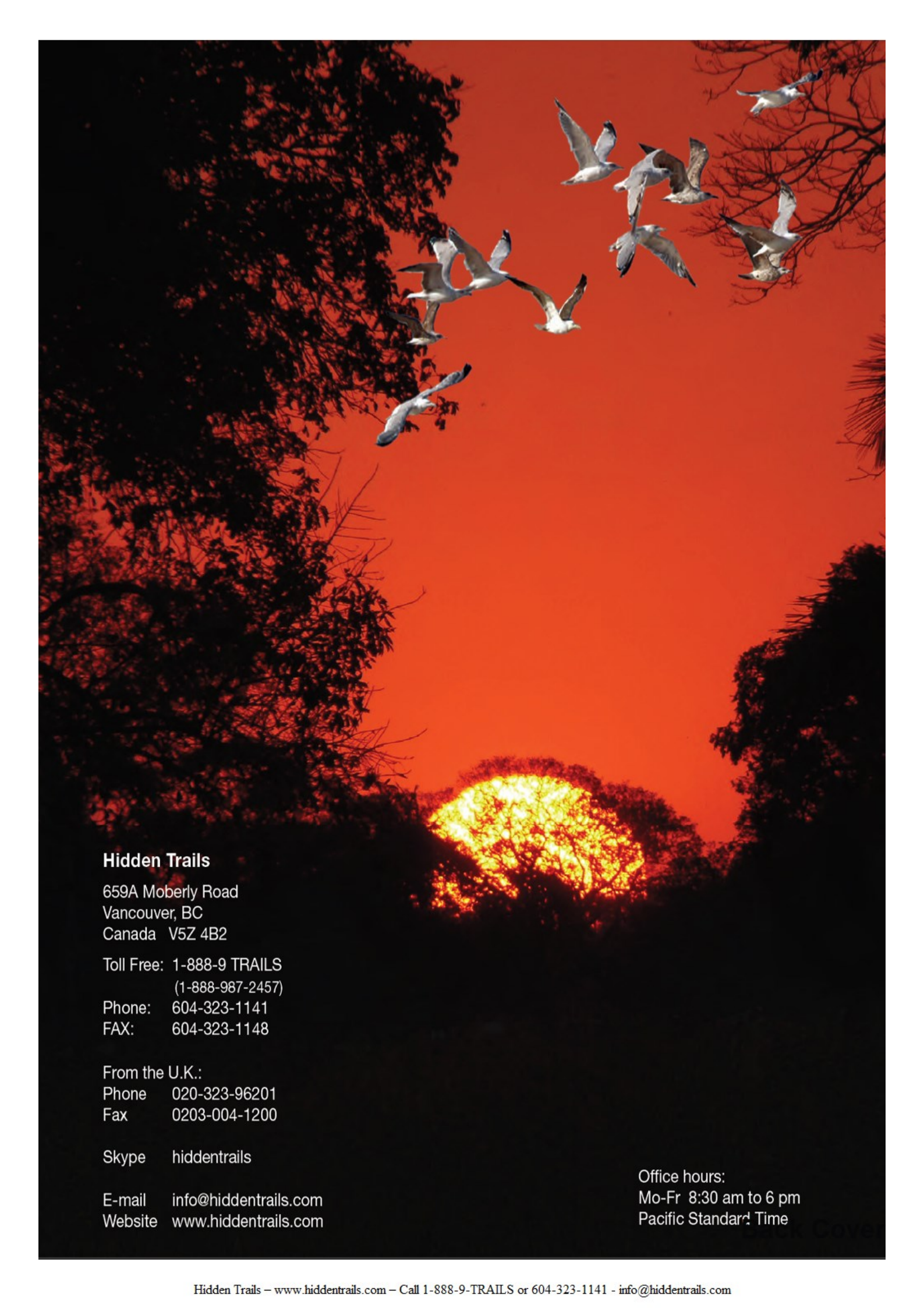
**Travel Cancellation Insurance** Credit Card required

Sign me (us) up ☐ initial \_\_\_\_\_

No, we will provide our own ☐ initial \_\_\_\_\_

**Hidden Trails Ltd. 659A Moberly Rd. Vancouver, BC V5Z 4B3 FAX: 604-323-1148 Phone: 604-323-1141**





## Hidden Trails

659A Moberly Road  
Vancouver, BC  
Canada V5Z 4B2

Toll Free: 1-888-9 TRAILS  
(1-888-987-2457)

Phone: 604-323-1141  
FAX: 604-323-1148

From the U.K.:

Phone 020-323-96201  
Fax 0203-004-1200

Skype hiddentrails

E-mail [info@hiddentrails.com](mailto:info@hiddentrails.com)  
Website [www.hiddentrails.com](http://www.hiddentrails.com)

Office hours:  
Mo-Fr 8:30 am to 6 pm  
Pacific Standard Time