

Hidden Trails

Ph. 1-888-9-TRAILS

*Equestrian Vacations
- on & with Hidden Trails*

About Hidden Trails



Hidden Trails is owned and operated by nature enthusiasts who love horses and adventure activities. We have been involved with riding and other outdoor vacations for over 20 years.

With our partners Voyage du Cheval (France), Pegasus (Germany) as well as Equitour (Switzerland and France) we have collected the best riding destinations all over the world in some hidden places we would like to share with you.

These rides are about galloping on endless beaches, forging rivers, cantering through forests, trotting along age-old trails, gazing at beautiful vistas and encountering foreign cultures. But most of all, these trips are about getting away from the cycle of too much work and never enough free time.

Escape from the rituals, which long ago froze our nights and days into little more than routine and away from the worries of our new tense times. It is so satisfying when we take the plunge of adventure - it's unfortunate that we invent so many reasons to put aside living our dreams of adventure. It is sometimes a tangled web that we weave through life. Some of the threads reveal a work-a-day world of commitments, duties and obligations. Other threads are of a quiet fabric of hope, responsibility and refreshment.

On our adventures you see the real country, its back country and meet the locals. The love for horses has no boundaries but possesses a common language we all speak and understand. The majority of the overseas rides are from inn to inn, some from castle to castle and a few are camping rides.

You will experience new countries and their customs and make new friends. The Hidden Trails trips are the best you can find.

They have been tested by our staff or associates and received our stamp of approval. If you are considering a special riding vacation anywhere in the world, call us first and let our experienced consultants match the perfect trip with your dream.

We will listen to you and give you objective advice to help you choose the best destination and adventure.

Your vacation is the most precious time of the year and we are committed to making it the most memorable time of your life. Wherever you go, have a great time and bring back some peace of mind.

Thank you for your continued support.

Hidden Trails

Phone: 604-323-1141

Fax: 604-323-1148

Toll Free: 1-888-9-TRAILS

from within the USA or Canada or

E-mail: info@hiddentrails.com

Website: www.hiddentrails.com

Address:

659A Moberly Road, Vancouver BC Canada V5Z 4B3 or

4406 Tennyson Road, Wilmington, DE 19802 USA

Toll Free from the U.K.:

Ph: 0- 808 189-0420

Fax: 0-808-280-1860

Toll Free Worldwide:

Skype: hiddentrails

Coral I & II 5-day Cruise - Ecuador, South America

Tour Code: ZZ-EC-GALP04-4

5 days / 4 nights ~\$2,525.00

Dates: Available all Year

Trip Rating : ●●●●●

Difficulty : ●●●●●

Lodging : ●●●

[Tack:](#)

[Horses:](#)

[Pace:](#)

[Airport:](#) Baltra



Introduction

Galapagos, Ecuador

MYCoral I 36 passengers

MYCoral II 20 passengers

These unique and functional luxury yachts are a perfect combination of classic beauty and exquisite style. The materials used in their decoration convey a pleasing sensation of warmth and comfort that will transport you automatically into a marine environment. You will be a part of nature thanks to the ample panoramic windows. Every single detail has been taken into consideration to make your stay on board unique and unforgettable. The jacuzzi, sun and shadow decks will give you a perfect space to relax. The social areas and the bar will be a place to enjoy.

Relax

To relax in the sun or even bathe in the jacuzzi, head to the MY Coral I outside decks, where the natural wonders of the Galapagos can be enjoyed from a whole different perspective, whether by the handrail of their decks, the comfort of a sun-lounger or from the balcony at the bow. There's a space for everyone on these deceptively large yachts. Our lounge offers indoor relaxation if you're wanting a break from the sun.

Enjoy

Enjoy the various activities on board. On board our ship, nights are magical, full of bright stars and countless constellations. You can go shopping at our boutique, or enjoy a freshening drink at the bar.

Learn

All of our highly-qualified multi-lingual naturalist guides are certified by the Galapagos National Park. On visits to the islands, they will accompany you every step of the way, taking time to explain the highlights as you wonder through this new and magical land. Every evening, these same guides will give you a lecture illustrated with multimedia presentation, imparting and sharing with you their knowledge of geology, history, evolution, flora and fauna of the islands. Enjoy our library to further enhance your experience.

Feel Safe

Our customers' safety and the conservation and respect for the environment are our main priorities. Our vessels comply with local and international standards enforced by ISM (International Management Code for the Safe Operation of Ships and for Pollution Prevention). Our crews are all highly trained in safety procedures and have years of experience at sea.

Accommodation



Accommodations

All nights of this trip are spent on either the Coral I or Coral II (depending on chosen departure). The Coral I & II are gorgeous, comfortable sister yachts with four decks and a total of 18 (36 guests max) and 11 (20 guests max) cabins respectively. Both boats have been refurbished during the summer of 2019.

Each of the Coral boat has 3 different cabin categories:

- Standard Cabin (2 cabins in the Coral I)
- Standard Plus Cabin (8 cabins in the Coral I and 4 cabins in the Coral II)
- Junior Cabin (8 cabins in the Coral I and 7 cabins in the Coral II)

All cabin categories include a private bathroom (with hairdryer and toiletries), safe-deposit box, air conditioning, phone (internal calls only) and a TV.

There are cabins with interconnecting doors suitable for families or friends traveling together.

Our voltage is set for 110-220 volts/60 Hz. There are Wi-Fi zones onboard.

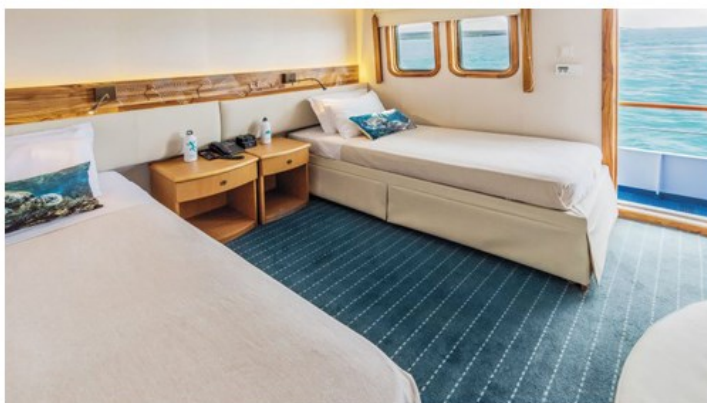




Standard Cabin - measuring an average of 7 m² / 75ft²
Double and single occupancy possible.
There are 2 portholes in each Standard Cabin.



Standard Plus Cabin - measuring an average of 11 m² / 118 ft²
Double and triple occupancy possible.
There are 2 portholes per Standard Plus Cabin.



Junior Cabin - measuring an average of 12 m² / 128 ft²
Double and triple occupancy possible.
Each Junior Cabin has 2 picture windows.

Onboard Service and Facilities include:

- Drying machines available for complimentary use
- Variety of onboard activities
- Briefings on the following day's activities
- Informative lectures about the Galapagos

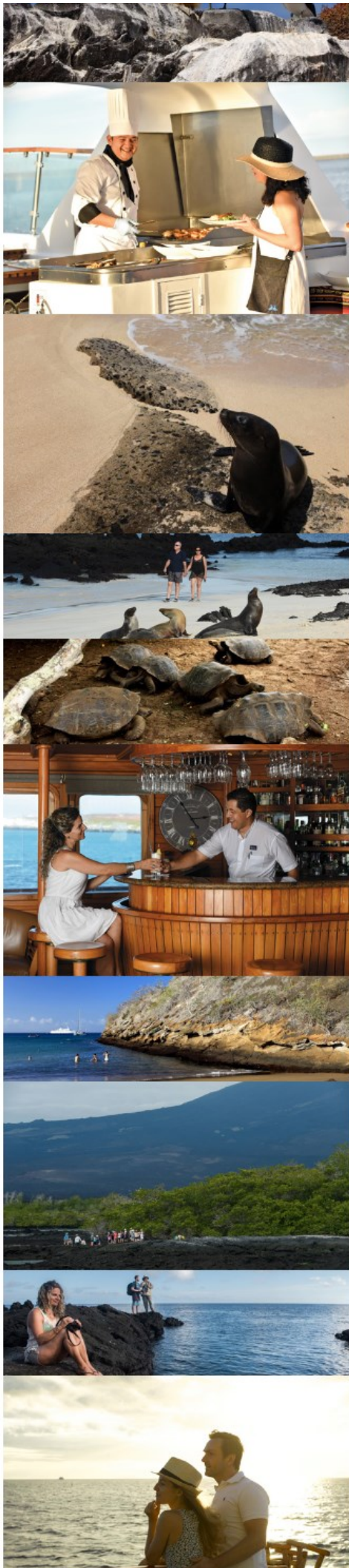


Meals

All meals are included during the cruise.

The restaurant serves delicious Ecuadorian and international cuisine that even extends to a BBQ dinner on the open-air Moon Deck.

Make the most of your cruise experience with our beverage packages (not included in tour price - to be paid extra) that offer a range of soft drinks, local beer, a selection of sparkling wines and classic cocktails to be served



at our bars and restaurants.



Riding

Staff

Every crew member is trained to provide a first-class service with exceptional professionalism. Genuinely friendly individuals, fully dedicated to providing the best hospitality services, with attention to detail and personalized assistance, our crew's passion and commitment create a one-of-a-kind experience for our guests.

Physical requirement for the cruise

We recommend that passengers be in reasonably good physical condition as some trails are difficult therefore elderly or disabled people may find them too hard. The passengers with difficulties must notify us about their physical condition in order to make the necessary arrangements.

We reserve the right to refuse a passenger if someone failed to inform of any physical disability, or who in the opinion of the company, constitutes a danger to themselves, other guest, members of the crew, or the smooth operation of the vessel.

Dry Landings and Wet Landings

On a dry landing, passengers step directly from a dinghy to rocks or onto a dock. We recommend: walking shoes, sunscreen, hat, water, insect repellent and a light jacket.

Wet Landing means that the dinghy edges up onto a beach, where you step into knee-deep water assisted by crew members and guides. We recommend: swimming suit or shorts, walking shoes or slippers, towel that will be provided by the crew while disembarking, sunscreen, hat, insect repellent, plastic bag, well insulated cameras and a windbreaker.

Smoking policy on board the ship

It is forbidden to smoke inside the yachts or the vessel.
Smoking is allowed ONLY on the sun decks.

How can I pay my expenses on board?

Upon arrival, a bill will be opened for you. If you wish to pay with your credit card, we ask you to come to reception to sign a voucher and to make copies of your passport and credit card. Authorizations take about 48 hours, so please do this on your first cruise day. We accept all main credit cards: Diners, Visa, Mastercard, American Express. Travellers Checks, Euros and US Dollars are also accepted.

What would happen if I get seasick?

We hardly get a seasick passenger on board. However, we have seasick medication on board all our ships, but if you are particularly sensitive you can bring your own medication.

Is the water safe to drink?

The tap water is generally not safe to drink in Ecuador. Bottled water is readily available at tourist sites, hotels, and restaurants. On board our yachts you will find bottled water in your room. Ice used onboard the yachts is generally made with purified water as well.

Itinerary

Sample Itinerary: West option - subject to changes

Day 1 (Sunday): Arrival & Santa Cruz Island Visit

Departure from Quito or Guayaquil to Baltra Island (approx. 2¼-hour flight). Arriving in the Galapagos, passengers are picked up at the airport by our naturalist guides and taken on a ten-minute bus drive to the pier to board the M/Y Coral I or M/Y Coral II.

This afternoon, dry landing on Santa Cruz Island. In the mountains of Galapagos, it is possible to admire different kinds of birds, such as tree and ground finches, vermillion flycatchers, paint-billed cranes, yellow warblers, and cattle egrets (usually standing on the tortoises' shell). The journey to the reserve offers great opportunities to see the contrasts that the island offers in reference to the variety of ecosystems. The road goes from the coast through the agricultural zone and straight up to the dense humid forests. Often, Galapagos Giant Tortoises are also seen on the way, wandering through pastures in the paddocks. This spot is a birdwatchers' haven since almost every land bird present on the island lives or migrates here.

Activity Difficulty: easy (flat & muddy terrain depending on season)

Activity Duration: 45-minute drive / 1 ½-hour walk

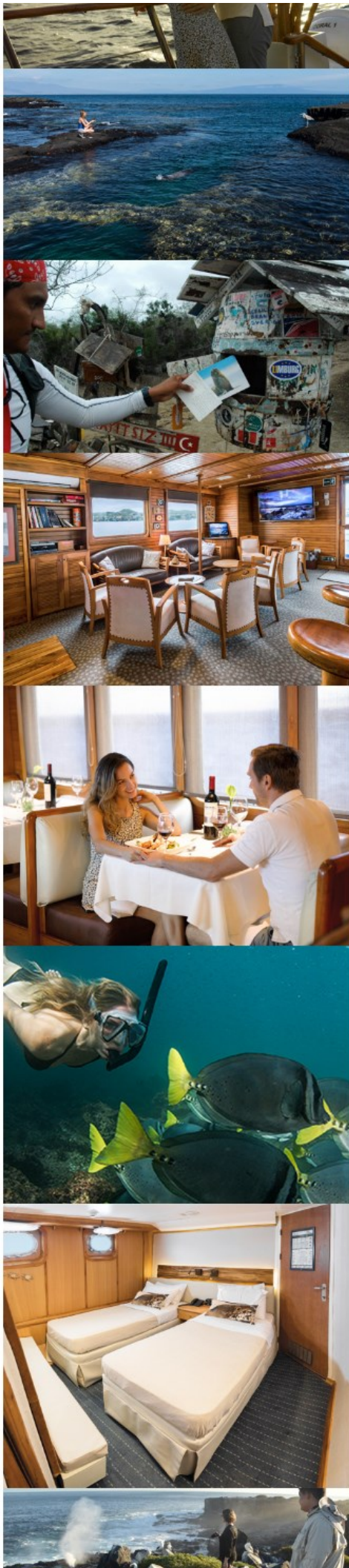
Day 2 (Monday): Isabela & Fernandina Islands

Vicente Roca Point (Isabela Island) is a high peak of land created out of remains of a tuff cone, with two protected turquoise coves on both sides. One of them, the Bolivar Channel is one of the richest marine ecosystems on Earth. This place is only accessible by water, with great opportunities for deep-water snorkeling. In this part of the Galapagos, the upwelling of cold water currents from the west, offer an abundant plankton supply for marine species like red-lipped batfish, seahorses, frogfish, nudibranchs, octopus, and the mola-mola or sunfish. It is common to observe dolphin pods, sea lions rafts, and tuna banks. The dinghy ride along the coast will allow observing a great diversity of seabirds like noddies, brown pelicans, Galapagos penguins, flightless cormorants, Nazca and Blue-footed boobies are often seen feeding all at once during the cold season (May – December). Whale watching is also common while navigating.

Activity Difficulty: intermediate

Activity Duration: 1-hour snorkeling / 1-hour dinghy ride

After lunch, dry landing on Fernandina Island. From Espinosa Point, is possible to admire a wide view of Isabela Island across the Bolivar Channel, as well as that hosts some of the highest diversity of endemic species found in the



island across the Bolivar Channel, an area that hosts some of the highest diversity of endemic sea fauna in the Galapagos. Here, the largest most primitive-looking marine iguanas are found mingling with sea lions and Sally Lightfoot Crabs. Fernandina island displays a wonderful opportunity to encounter flightless cormorants at their nesting sites. The Galapagos penguins and the "King" of predators on the islands, the Galapagos Hawk, can also be spotted. Pa-hoe-hoe and AA lava formations cover the majority of Fernandina terrain. Vegetation is scarce inland, with the exception of a few brachycereus cacti. In the shore, mangrove can be found.

Activity Difficulty: intermediate (rocky terrain)

Activity Duration: 2-hours walk / 1-hour snorkeling

Day 3 (Tuesday): Isabela Island

We start the day with a wet landing in Urbina Bay (might be difficult due to the tide). Volcanic black beach, depending on the season, it is possible to find giant tortoises, land iguanas, and the unusual flightless cormorant. After a short walk inland it's snorkeling time, a chance to swim with sea turtles, sea lions, and countless tropical fish. Urbina Bay features a wide variety of plants with the different range of colors in flowers, attracting different insects, birds, and reptiles. One of the highlights of the island is the uplifted coral reef that resulted from the 1954 seismic activity; here the views of Alcedo Volcano are remarkable. When navigating from Urbina to Tagus Cove whale watching is usual in May – December.

Activity Difficulty: intermediate (flat & rocky terrain)

Activity Duration: 1 ½-hour walk / 1-hour snorkeling

This afternoon, dry landing in Tagus Cove, on Galapagos' largest island (Isabela) where we will learn about the eruption of the five volcanoes that form it. The trail leads to Darwin's salt-water crater lake and excellent views of lava fields and volcanic formations. We will return by the same path for a dinghy ride along a shoreline full of marine wildlife, where we will admire a variety of seabirds, such as Blue-footed Booby, Brown Noddy, terns, Flightless Cormorant and depending on the season, a large number of Galapagos Penguins which are only 35 cm tall; the only penguin species in the world to live in the tropics.

The population of penguins on the islands is about 2,000 individuals, most of which live on this western portion of Isabela; others are scattered further south. We will have an opportunity to snorkel in deep water. Graffiti believed to have been left by 19th-century pirates is a curious reminder of an intriguing past.

Activity Difficulty: intermediate / difficult (steep)

Activity Duration: 2-hour walk / 40-minutes dinghy ride / 1-hour deep water snorkeling

Day 4 (Wednesday): Santiago Island

After breakfast, wet landing at Egas Port, a black volcanic sand beach, visited by Darwin in 1835. The first section of the trail is formed of volcanic ash (eroded tuff) and the other half is an uneven terrain of volcanic basaltic rock. The unique, truly striking layered terrain of Santiago shore is home to a variety of animals including the bizarre yellow-crowned night heron and marine wildlife including lobster, starfish and marine iguanas grazing on algae beds alongside Sally light-foot crabs. It is easy to see colonies of endemic fur seals swimming in cool water volcanic rock pools.

Activity Difficulty: intermediate (flat & semi-rocky terrain)

Activity Duration: 1½-hour walk / 1-hour snorkeling

Later that day, wet landing in Sullivan Bay. This site located at the southeastern portion of Santiago Island is of important geologic interest. It features extensive relative young pa-hoe-hoe lava flows formed during the last quarter of the 19th century. In the middle of the lava flow, older reddish-yellow-colored tuff cones appear. Mollugo plants with their yellow-to-orange whorled leaves usually grow out of the fissures. Walking on the solidified lava gives the impression of been in another planet. Tree molds are found, indicating that in that position large size plants grew in small crevices, until the lava flow of past eruptions burned down the flora of the island.

Activity Difficulty: difficult (flat volcanic lava)

Activity Duration: 1½-hour walk / 1-hour snorkeling / beach time

Day 5 (Thursday): Departure

For our last morning, wet landing on Bachas Beach. On the north side of Santa Cruz; behind the beach lies two small flamingo ponds where iguanas sunbathe, see coastal birds, Darwin finches, mockingbirds, and gulls, as well as interesting native vegetation like red and black mangrove, salt bushes. This beach is one of the main sea turtles nesting sites in the Galapagos. A turtle can lay eggs 3 or 4 times per season with an average of 70 eggs each time. At this paradisiacal site, we will also find the remains of barges that sank a long time ago, when the United States Navy operated a base during World War II on Baltra Island. Local people modified the word barges to "Bachas".

Activity Difficulty: easy (sandy terrain)

Activity Duration: 1-hour walk / 1-hour snorkeling/ beach time

After the visit, passengers will be transferred to the airport for their return flight to Guayaquil or Quito.

Sample Itinerary: South option - subject to changes

Day 1 (Sunday): Arrival & San Cristobal Island Visit

Departure from Quito or Guayaquil to San Cristobal (2 1/2 hours flight). Arriving in Galapagos, passengers are picked up at the airport by our naturalist guides and taken to the pier to board the MY Coral I or MY Coral II.

We start the afternoon with a dry landing in Puerto Baquerizo Moreno, the capital of the Galapagos Islands (San Cristobal Island). Passengers visit the Interpretation Center, an excellent place to learn about islands' history in The Museum of Natural History which displays information about the volcanic origins of the islands, their remoteness from the continent, ocean currents, climate, the arrival of the different species and their colonization, among other points of interest. The human history is also showcased, chronologically narrating the most significant events related to the discovery and the island's colonization.

Activity Difficulty: easy / intermediate (flat terrain with stairs)

Activity Duration: 1-hour visit / 1-hour walk

Later that day, we visit Tijeretas Hill, which involves a high-intensity walk amidst beautiful landscapes and a magnificent view at the foot of a frigate bird nesting colony.

Activity Difficulty: difficult (rocky terrain)

Activity Duration: 1-hour visit

Day 2 (Monday): San Cristobal Island

We start the day with wet landing at Cerro Brujo, an eroding tuff cone that is composed of AA lava formations; it is close to a beautiful white sandy beach which is great for snorkeling and sunbathing. Nearby a lagoon ideal for migratory bird species can be seen, including black-necked stilts, ruddy turnstones, whimbrels, sandpiper, and white-cheeked Pintails. Cerro Brujo offers beautiful views of Kicker Rock, an islet in the adjacent southern coast of San Cristobal.

Activity Difficulty: easy (sandy terrain)

Activity Duration: 1-hour walk / 1-hour snorkeling

This afternoon, wet landing followed by a high-intensity hike at Pitt Point. The trail includes a 90 meters long, olivine beach and a path that climbs to the top of a volcanic tuff, through several magnificent viewpoints. This is probably the only site where the three booby species of the Galapagos can be seen together, as well as, two species of frigate birds and a sea lion colony. It is also excellent for dinghy rides and snorkeling, where a good



species of native birds and a sea lion colony. It is also excellent for lengthy naps and snorkeling, where a good range of sea birds can be observed.

Activity Difficulty: difficult (rocky terrain)

Activity Duration: 2½-hour walk / 40-minutes snorkeling or kayaking

Day 3 (Tuesday): Espanola Island

After breakfast, dry landing at Suarez Point, on Espanola Island. Espanola is an island of geological interest, being one of the oldest in Galapagos, it has a high percentage of endemism due to its isolation from the rest of the islands. Due to the great variety of wildlife, this is one of the most attractive spots in the Galapagos. Here, it is possible to explore volcanic formations and see large colonies of sea lion and seabirds including the Española mockingbird, Nazca boobies, and the spectacular red-billed tropicbirds. Here, the singular marine iguanas have a turquoise color with reddish parts during the breeding season, lava lizards, and the colorful Sally light-foot crabs. A somewhat lengthy hike brings visitors to nesting grounds that sometimes overlap the trail. Other birdwatchers favorites include the Galapagos dove, the Galapagos hawk, swallow-tailed gulls and the world's largest colony of waved albatross, an unequivocal highlight during mating season (April-December). Admire the island's dramatic backdrop, featuring the famous "Soplador," a seaward blowhole that shoots water up to 23 m. (75 ft.) into the air.

Activity Difficulty: difficult (rocky ground)

Activity Duration: 2½-hours walk

This afternoon, wet landing at Gardner Bay, a beautiful white coral sandy beach guarded by a colony of sea Lions. Here, there are no trails, so visitors stay along the shore, spotting the Galapagos hawk, the American oystercatcher, the Galapagos dove, hood mockingbirds, yellow warblers, lava lizards, marine iguanas, and three species of Darwin finches , cacti finch (Geospiza fuliginosa), the small ground finch (Geospiza fuliginosa) and the warbler finch (Certhidea olivacea). Swimming and snorkeling offers a great variety of Galapagos marine wildlife: king angelfish, creole fish, damselfish and parrot fish.

Activity Difficulty: easy (sandy terrain)

Activity Duration: 1-hours walk / 1-hours snorkeling

Day 4 (Wednesday): Floreana Island

Wet landing, on an olivine green, sanded beach: Cormorant point. We hike from the black mangrove beds to a brackish lagoon, which usually holds one of the largest flamingo populations in the Galapagos. This island features some endemic plants such as Scalesia villosa, white and black mangrove, and holy stick. The trail continues to a beautiful white sandy beach, one of the most important nesting sites of Green Pacific Sea Turtles. It is important to avoid walking in the water due to the Sting Rays that may be hiding in the sand, which can be dangerous if accidentally stepped on. From the beach, one can spot sea turtles, blue-footed boobies plunging into the water, and small reef sharks floating along the shoreline in the search for food.

This coral-sand beach marks the end of our trail, and we head back to the olivine beach we landed on, to swim or snorkel amongst sea turtles, reef fish, sea lions and, on a good day, white-tipped reef sharks. A small colony of penguins resides on Floreana and can sometimes be observed as well.

Activity Difficulty: easy (sandy & flat terrain)

Activity Duration: 1-hour walk / 1-hour snorkeling

After lunch, wet landing at a location called Post Office. Located on the north side of Floreana, the bay was named because in 1793 Captain James Colnett installed a wooden barrel which served as an informal post office for sailors passing through, who would take letters with them back to their destinations. Today, visitors continue the tradition by placing unstamped postcards inside the barrel, hoping that some other traveler, going to the letter destination, will take it back for free. The chances are that the letter posted can take a long time to arrive at its destination. However, there have been cases where it has arrived before the sender.

We may also encounter Darwin's finches, Yellow Warbler and Lava Lizards. Great snorkeling opportunities with Green Pacific Sea Turtles. As well, the island is best known for its endemic vegetation: Scalesia villosa, Lecocarpus Pinnatifidus, and the Galapagos Milkwort. Snorkelers can practice on the main beach among playful sea lions.

Activity Difficulty: easy (sandy terrain)

Activity Duration: 30-minute walk / 1-hour snorkeling

Day 5 (Thursday): Departure

For our last morning, dry landing on Santa Cruz Island. In the mountains of Galapagos, it is possible to admire different kind of birds, such as: tree and ground finches, vermillion flycatchers, paint-billed crakes, yellow warblers, and cattle egrets (usually standing on the tortoises' shell). The journey to the reserve offers great opportunities to see the contrasts that the island offers in reference to the variety of ecosystems. The road goes from the coast through the agricultural zone and straight up to the dense humid forests. Often, Galapagos Giant Tortoises are also seen on the way, wandering through pastures in the paddocks. This spot is a birdwatchers' haven, since almost every land bird present on the island lives or migrates here.

Activity Difficulty: easy (flat & muddy terrain depending on season)

Activity Duration: 45-minute drive / 1 ½-hour walk

After the visit, passengers will be transferred to the airport for their return flight to Guayaquil or Quito.

Other Info

Meeting: Baltra

Airport: Baltra

Transfer: Baltra

Pick-up/ drop-off is from Baltra Airport (GPS) or San Cristobal Airport (SCY) depending on the itinerary booked.

Tack:

Horses:

Pace:

Level: 🐢🐢🐢🐢🐢 (1 to 2 out of 5)

Riders: Min 8 riders Max 36 riders

Rates and Dates 2024 - ZZ-EC-GALP04-4

Rates include: Accommodation, All meals, Welcome & farewell cocktails, Coffee / tea station, 2 daily excursions, Multilingual naturalist guides (English/Spanish), Snorkeling opportunities, Optional Diving, Fuel surcharge, Free Shuttle service from Quito/Guayaquil Airport-roundtrip (when domestic flight is purchased in combination with cruises)
Guides speaking French, German and Italian upon request

Packages and Options

Season	Description	~US\$
A 2024	5 day Deluxe Cruise, Standard Interior- West (High)	\$2525
	Upgrade to Standard Plus, pp	\$600
	Upgrade to Junior Suite, pp	\$1040
B 2024	5 day Deluxe Cruise, Standard Interior- South (High)	\$2525
	Upgrade to Standard Plus, pp	\$600
	Upgrade to Junior Suite, pp	\$1040
C 2024	5 day Deluxe Cruise, Standard Interior- West (Low)	\$2505
	Upgrade to Standard Plus, pp	\$600
	Upgrade to Junior Suite, pp	\$1035
D 2024	5 day Deluxe Cruise, Standard Interior- South (Low)	\$2505
	Upgrade to Standard Plus, pp	\$600
	Upgrade to Junior Suite, pp	\$1035

Rates Note:The transit card fee and the Galapagos entrance fee must be paid to the CGG (Consejo de Gobierno de Galapagos) at the airport in cash.

Transfer Option

Description

2024	Air ticket from Quito/ Guayaquil to Galapagos, per adult, roundtrip	\$495
2024	Transfer from Quito/ Guayaquil Airport (if airfare not booked) - please inquire (Mandatory)	
2024	Single Supplement: +50% on standard (+75% on holiday season)	
2024	Child discount (under 12) - please inquire	
2024	Triple room discount - please inquire	
2024	CGG Migration Card (mandatory), pp	\$20
2024	Entrance fee to Galapagos (mandatory), per adult - effective until end of July 2024	\$100
2024	Entrance fee to Galapagos (mandatory), per child under 12 - effective until end of July 2024	\$50
2024	Entrance fee to Galapagos (mandatory), per adult - effective from August 1, 2024	\$200
2024	Entrance fee to Galapagos (mandatory), per child under 12 - effective from August 1, 2024	\$100

Tour Dates

Season	Tour Dates		
D 2024	01/28/2024 - 02/01/2024	5d / 4n	5 day Deluxe Cruise, Standard Interior- South (Low)
C 2024	01/28/2024 - 02/01/2024	5d / 4n	5 day Deluxe Cruise, Standard Interior- West (Low)
C 2024	02/04/2024 - 02/08/2024	5d / 4n	5 day Deluxe Cruise, Standard Interior- West (Low)
D 2024	02/04/2024 - 02/08/2024	5d / 4n	5 day Deluxe Cruise, Standard Interior- South (Low)
D 2024	02/11/2024 - 02/15/2024	5d / 4n	5 day Deluxe Cruise, Standard Interior- South (Low)
C 2024	02/11/2024 - 02/15/2024	5d / 4n	5 day Deluxe Cruise, Standard Interior- West (Low)
C 2024	02/18/2024 - 02/22/2024	5d / 4n	5 day Deluxe Cruise, Standard Interior- West (Low)
D 2024	02/18/2024 - 02/22/2024	5d / 4n	5 day Deluxe Cruise, Standard Interior- South (Low)
D 2024	02/25/2024 - 02/29/2024	5d / 4n	5 day Deluxe Cruise, Standard Interior- South (Low)
C 2024	02/25/2024 - 02/29/2024	5d / 4n	5 day Deluxe Cruise, Standard Interior- West (Low)
C 2024	03/03/2024 - 03/07/2024	5d / 4n	5 day Deluxe Cruise, Standard Interior- West (Low)
D 2024	03/03/2024 - 03/07/2024	5d / 4n	5 day Deluxe Cruise, Standard Interior- South (Low)
D 2024	03/10/2024 - 03/14/2024	5d / 4n	5 day Deluxe Cruise, Standard Interior- South (Low)
C 2024	03/10/2024 - 03/14/2024	5d / 4n	5 day Deluxe Cruise, Standard Interior- West (Low)
C 2024	03/17/2024 - 03/21/2024	5d / 4n	5 day Deluxe Cruise, Standard Interior- West (Low)
D 2024	03/17/2024 - 03/21/2024	5d / 4n	5 day Deluxe Cruise, Standard Interior- South (Low)
D 2024	03/24/2024 - 03/28/2024	5d / 4n	5 day Deluxe Cruise, Standard Interior- South (Low)
C 2024	03/24/2024 - 03/28/2024	5d / 4n	5 day Deluxe Cruise, Standard Interior- West (Low)
C 2024	03/31/2024 - 04/04/2024	5d / 4n	5 day Deluxe Cruise, Standard Interior- West (Low)
D 2024	03/31/2024 - 04/04/2024	5d / 4n	5 day Deluxe Cruise, Standard Interior- South (Low)
D 2024	04/07/2024 - 04/11/2024	5d / 4n	5 day Deluxe Cruise, Standard Interior- South (Low)
C 2024	04/07/2024 - 04/11/2024	5d / 4n	5 day Deluxe Cruise, Standard Interior- West (Low)
C 2024	04/14/2024 - 04/18/2024	5d / 4n	5 day Deluxe Cruise, Standard Interior- West (Low)
D 2024	04/14/2024 - 04/18/2024	5d / 4n	5 day Deluxe Cruise, Standard Interior- South (Low)
D 2024	04/18/2024 - 04/22/2024	5d / 4n	5 day Deluxe Cruise, Standard Interior- South (Low)
C 2024	04/18/2024 - 04/22/2024	5d / 4n	5 day Deluxe Cruise, Standard Interior- West (Low)
D 2024	04/21/2024 - 04/25/2024	5d / 4n	5 day Deluxe Cruise, Standard Interior- South (Low)
C 2024	04/21/2024 - 04/25/2024	5d / 4n	5 day Deluxe Cruise, Standard Interior- West (Low)
D 2024	05/05/2024 - 05/09/2024	5d / 4n	5 day Deluxe Cruise, Standard Interior- South (Low)
C 2024	05/05/2024 - 05/09/2024	5d / 4n	5 day Deluxe Cruise, Standard Interior- West (Low)
C 2024	05/12/2024 - 05/16/2024	5d / 4n	5 day Deluxe Cruise, Standard Interior- West (Low)
D 2024	05/12/2024 - 05/16/2024	5d / 4n	5 day Deluxe Cruise, Standard Interior- South (Low)
D 2024	05/19/2024 - 05/23/2024	5d / 4n	5 day Deluxe Cruise, Standard Interior- South (Low)
C 2024	05/19/2024 - 05/23/2024	5d / 4n	5 day Deluxe Cruise, Standard Interior- West (Low)
C 2024	05/26/2024 - 05/30/2024	5d / 4n	5 day Deluxe Cruise, Standard Interior- West (Low)
D 2024	05/26/2024 - 05/30/2024	5d / 4n	5 day Deluxe Cruise, Standard Interior- South (Low)
D 2024	06/02/2024 - 06/06/2024	5d / 4n	5 day Deluxe Cruise, Standard Interior- South (Low)
C 2024	06/02/2024 - 06/06/2024	5d / 4n	5 day Deluxe Cruise, Standard Interior- West (Low)
C 2024	06/09/2024 - 06/13/2024	5d / 4n	5 day Deluxe Cruise, Standard Interior- West (Low)
D 2024	06/09/2024 - 06/13/2024	5d / 4n	5 day Deluxe Cruise, Standard Interior- South (Low)
D 2024	06/16/2024 - 06/20/2024	5d / 4n	5 day Deluxe Cruise, Standard Interior- South (Low)
C 2024	06/16/2024 - 06/20/2024	5d / 4n	5 day Deluxe Cruise, Standard Interior- West (Low)
C 2024	06/23/2024 - 06/27/2024	5d / 4n	5 day Deluxe Cruise, Standard Interior- West (Low)
D 2024	06/23/2024 - 06/27/2024	5d / 4n	5 day Deluxe Cruise, Standard Interior- South (Low)
D 2024	06/30/2024 - 07/04/2024	5d / 4n	5 day Deluxe Cruise, Standard Interior- South (Low)
C 2024	06/30/2024 - 07/04/2024	5d / 4n	5 day Deluxe Cruise, Standard Interior- West (Low)
C 2024	07/07/2024 - 07/11/2024	5d / 4n	5 day Deluxe Cruise, Standard Interior- West (Low)
D 2024	07/07/2024 - 07/11/2024	5d / 4n	5 day Deluxe Cruise, Standard Interior- South (Low)
D 2024	07/14/2024 - 07/18/2024	5d / 4n	5 day Deluxe Cruise, Standard Interior- South (Low)
C 2024	07/14/2024 - 07/18/2024	5d / 4n	5 day Deluxe Cruise, Standard Interior- West (Low)
C 2024	07/21/2024 - 07/25/2024	5d / 4n	5 day Deluxe Cruise, Standard Interior- West (Low)
D 2024	07/21/2024 - 07/25/2024	5d / 4n	5 day Deluxe Cruise, Standard Interior- South (Low)

D 2024	07/28/2024 - 08/01/2024	5d / 4n	5 day Deluxe Cruise, Standard Interior- South (Low)
C 2024	07/28/2024 - 08/01/2024	5d / 4n	5 day Deluxe Cruise, Standard Interior- West (Low)
C 2024	08/04/2024 - 08/08/2024	5d / 4n	5 day Deluxe Cruise, Standard Interior- West (Low)
D 2024	08/04/2024 - 08/08/2024	5d / 4n	5 day Deluxe Cruise, Standard Interior- South (Low)
D 2024	08/11/2024 - 08/15/2024	5d / 4n	5 day Deluxe Cruise, Standard Interior- South (Low)
C 2024	08/11/2024 - 08/15/2024	5d / 4n	5 day Deluxe Cruise, Standard Interior- West (Low)
C 2024	08/18/2024 - 08/22/2024	5d / 4n	5 day Deluxe Cruise, Standard Interior- West (Low)
D 2024	08/18/2024 - 08/22/2024	5d / 4n	5 day Deluxe Cruise, Standard Interior- South (Low)
D 2024	08/25/2024 - 08/29/2024	5d / 4n	5 day Deluxe Cruise, Standard Interior- South (Low)
C 2024	08/25/2024 - 08/29/2024	5d / 4n	5 day Deluxe Cruise, Standard Interior- West (Low)
C 2024	09/01/2024 - 09/05/2024	5d / 4n	5 day Deluxe Cruise, Standard Interior- West (Low)
D 2024	09/01/2024 - 09/05/2024	5d / 4n	5 day Deluxe Cruise, Standard Interior- South (Low)
D 2024	09/08/2024 - 09/12/2024	5d / 4n	5 day Deluxe Cruise, Standard Interior- South (Low)
C 2024	09/08/2024 - 09/12/2024	5d / 4n	5 day Deluxe Cruise, Standard Interior- West (Low)
C 2024	09/15/2024 - 09/19/2024	5d / 4n	5 day Deluxe Cruise, Standard Interior- West (Low)
D 2024	09/15/2024 - 09/19/2024	5d / 4n	5 day Deluxe Cruise, Standard Interior- South (Low)
D 2024	09/22/2024 - 09/26/2024	5d / 4n	5 day Deluxe Cruise, Standard Interior- South (Low)
C 2024	09/22/2024 - 09/26/2024	5d / 4n	5 day Deluxe Cruise, Standard Interior- West (Low)
C 2024	09/29/2024 - 10/03/2024	5d / 4n	5 day Deluxe Cruise, Standard Interior- West (Low)
D 2024	09/29/2024 - 10/03/2024	5d / 4n	5 day Deluxe Cruise, Standard Interior- South (Low)
D 2024	10/06/2024 - 10/10/2024	5d / 4n	5 day Deluxe Cruise, Standard Interior- South (Low)
C 2024	10/06/2024 - 10/10/2024	5d / 4n	5 day Deluxe Cruise, Standard Interior- West (Low)
C 2024	10/13/2024 - 10/17/2024	5d / 4n	5 day Deluxe Cruise, Standard Interior- West (Low)
D 2024	10/13/2024 - 10/17/2024	5d / 4n	5 day Deluxe Cruise, Standard Interior- South (Low)
D 2024	10/20/2024 - 10/24/2024	5d / 4n	5 day Deluxe Cruise, Standard Interior- South (Low)
C 2024	10/20/2024 - 10/24/2024	5d / 4n	5 day Deluxe Cruise, Standard Interior- West (Low)
C 2024	10/27/2024 - 10/31/2024	5d / 4n	5 day Deluxe Cruise, Standard Interior- West (Low)
D 2024	10/27/2024 - 10/31/2024	5d / 4n	5 day Deluxe Cruise, Standard Interior- South (Low)
D 2024	11/03/2024 - 11/07/2024	5d / 4n	5 day Deluxe Cruise, Standard Interior- South (Low)
C 2024	11/03/2024 - 11/07/2024	5d / 4n	5 day Deluxe Cruise, Standard Interior- West (Low)
C 2024	11/10/2024 - 11/14/2024	5d / 4n	5 day Deluxe Cruise, Standard Interior- West (Low)
D 2024	11/10/2024 - 11/14/2024	5d / 4n	5 day Deluxe Cruise, Standard Interior- South (Low)
D 2024	11/17/2024 - 11/21/2024	5d / 4n	5 day Deluxe Cruise, Standard Interior- South (Low)
C 2024	11/17/2024 - 11/21/2024	5d / 4n	5 day Deluxe Cruise, Standard Interior- West (Low)
C 2024	11/24/2024 - 11/28/2024	5d / 4n	5 day Deluxe Cruise, Standard Interior- West (Low)
D 2024	11/24/2024 - 11/28/2024	5d / 4n	5 day Deluxe Cruise, Standard Interior- South (Low)
D 2024	12/01/2024 - 12/05/2024	5d / 4n	5 day Deluxe Cruise, Standard Interior- South (Low)
C 2024	12/01/2024 - 12/05/2024	5d / 4n	5 day Deluxe Cruise, Standard Interior- West (Low)
C 2024	12/08/2024 - 12/12/2024	5d / 4n	5 day Deluxe Cruise, Standard Interior- West (Low)
D 2024	12/08/2024 - 12/12/2024	5d / 4n	5 day Deluxe Cruise, Standard Interior- South (Low)
D 2024	12/15/2024 - 12/19/2024	5d / 4n	5 day Deluxe Cruise, Standard Interior- South (Low)
C 2024	12/15/2024 - 12/19/2024	5d / 4n	5 day Deluxe Cruise, Standard Interior- West (Low)

Min/Max: 8/36

Weekly departures Wednesday to Sunday

Rates do not include: Drinks, Air ticket from Quito/ Guayaquil to Galapagos (can be booked for extra fee), Galapagos Entrance Fee (mandatory), CGG Migration Control Card (mandatory), Gratuities, Travel insurance, Gratuities, Snorkelling / diving equipment & Wet suits / kayak rentals

Reservation Form

Tour : _____ Code #: _____ from: _____ to: _____

The Travelers (Last Name, First Name)	Male Female	Single room / or tent	Birth Date MM/DD/YY	Height	Weight	Special diets	Beginner	Novice	Intermediate	Strong Inter.	Advanced	ride English	ride Western	mostly arena	mostly hacking
1. _____	<input type="checkbox"/>	<input type="checkbox"/>	_____	_____	_____	<input type="checkbox"/>	<input type="checkbox"/>	<input type="checkbox"/>	<input type="checkbox"/>	<input type="checkbox"/>	<input type="checkbox"/>	<input type="checkbox"/>	<input type="checkbox"/>	<input type="checkbox"/>	<input type="checkbox"/>
2. _____	<input type="checkbox"/>	<input type="checkbox"/>	_____	_____	_____	<input type="checkbox"/>	<input type="checkbox"/>	<input type="checkbox"/>	<input type="checkbox"/>	<input type="checkbox"/>	<input type="checkbox"/>	<input type="checkbox"/>	<input type="checkbox"/>	<input type="checkbox"/>	<input type="checkbox"/>
3. _____	<input type="checkbox"/>	<input type="checkbox"/>	_____	_____	_____	<input type="checkbox"/>	<input type="checkbox"/>	<input type="checkbox"/>	<input type="checkbox"/>	<input type="checkbox"/>	<input type="checkbox"/>	<input type="checkbox"/>	<input type="checkbox"/>	<input type="checkbox"/>	<input type="checkbox"/>
4. _____	<input type="checkbox"/>	<input type="checkbox"/>	_____	_____	_____	<input type="checkbox"/>	<input type="checkbox"/>	<input type="checkbox"/>	<input type="checkbox"/>	<input type="checkbox"/>	<input type="checkbox"/>	<input type="checkbox"/>	<input type="checkbox"/>	<input type="checkbox"/>	<input type="checkbox"/>

Special Diets: _____

Your fitness level: Excellent ☐ Moderate ☐ Poor ☐ How long have you been riding? _____

How often do you ride? _____ Have you been on other riding tours? No ☐ Yes ☐ last trip when? _____

If Hidden Trails offers a transfer from the local airport/station: I would like the transfer to be included: YES ☐ NO ☐

In an emergency, name and phone number of contact: _____

Attention: Please, if there is more than one participant, all have to sign the reservation form - make copies if needed

With my signature I confirm my reservation of the listed program(s) under the Hidden Trails Booking Conditions. I'm aware, and I made all participants aware of the risk involved with these outdoor adventure activities. All participants have read and agree with the Hidden Trails Booking Conditions and the Hidden Trails Recreational Activity Release and Indemnity Agreement in this brochure or as listed on the Internet.

I (we) will sign and forward the Recreational Activity Release and Indemnity Agreement at least 10 weeks before trip starting date.

Last Name and First Name (The Traveler) _____

Street _____ e-mail _____

City _____ State _____ Postal/Zip Code _____

Phone (wk) _____ (hm) _____ Cell _____ Fax _____

Date _____ Signature (mandatory) 1. _____

Please, charge a 25% deposit (minimum \$ 350 per person) now and full payment 10 weeks before the travel date to my credit card.

For payments by VISA ☐ or Mastercard ☐ (no debit cards)

Cardholder: _____

Card # _____ 3 digit Security # _____

Exp.Date: _____ Signature _____

Billing Address for Credit Card (if different than mailing address):

I have enclosed a check for the deposit ☐

Additional Signatures:

2. _____
3. _____
4. _____

Travel Cancellation Insurance Credit Card required

Sign me (us) up ☐ initial _____

No, we will provide our own ☐ initial _____

Hidden Trails Ltd. 659A Moberly Road Vancouver, BC V5Z 4B3 FAX: 604-323-1148 Phone: 604-323-1141

Hidden Trails

659A Moberly Road
Vancouver, BC
Canada V5Z 4B2

Toll Free: 1-888-9 TRAILS
(1-888-987-2457)

Phone: 604-323-1141

FAX: 604-323-1148

From the U.K.:

Phone 020-323-96201

Fax 0203-004-1200

Skype hiddentrails

E-mail info@hiddentrails.com

Website www.hiddentrails.com

Office hours:

Mo-Fr 8:30 am to 6 pm

Pacific Standard Time

